




R4978789

 Arroyo de la Miel

REF# R4978789 495.000 €

BEDS

4

BATHS

2

BUILT

240 m²

TERRACE

70 m²

Detached House for Sale in Benalmádena with Sea Views and South-Facing Orientation – Spacious and Bright

Discover this impressive house for sale in Benalmádena, a home designed to offer comfort, natural light, and stunning views. With 230 m² of built space on a 149 m² plot, this property combines spaciousness, functionality, and a warm, inviting atmosphere.

On the ground floor, you will find a bedroom with fitted wardrobes, a full bathroom, and an open-plan kitchen connected to the living room, featuring a cosy fireplace. From the living area, step directly into the private garden, an ideal space for relaxation, where children can enjoy their own wooden cabin.

The first floor boasts three bedrooms with breathtaking sea views, along with a full bathroom with a bathtub, perfect for unwinding. On the second floor, the private solarium is the ideal spot to enjoy the Mediterranean climate all year round. This level also includes a laundry room and a bright office with sea views, providing a peaceful and inspiring workspace.

+34 951 123 083 | +44 (0)330 179 8687 | info@idiliqestates.com Local 28, Edificio D, Centro de Negocios Puerta de Banús, N-340, Km 175, 29660 Nueva Andalucía

IDILIQ

ESTATES

Thanks to its south-facing orientation, this home is filled with natural light throughout the day, creating a sense of openness and well-being. Its layout and features make it a fantastic option for those seeking quality living in a prime location.

Key Features:

230 m² built | 149 m² plot

4 bedrooms | 2 bathrooms

Sea views from multiple rooms

Private terrace and solarium

South-facing – Maximum natural light

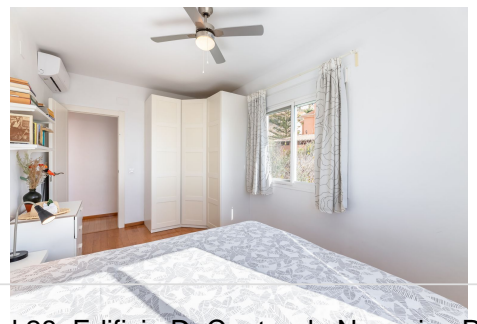
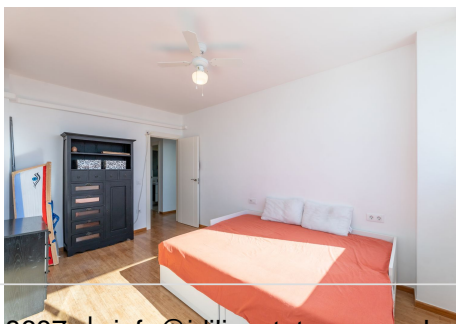
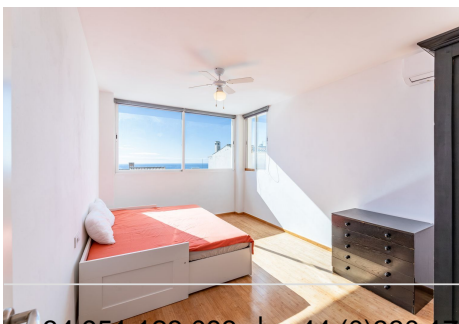
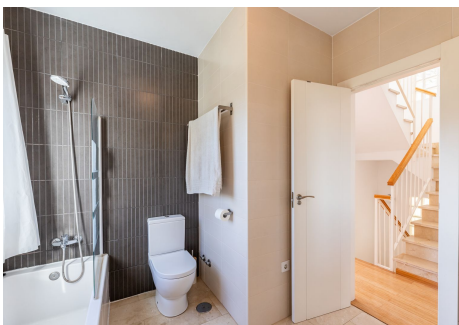
Private garden with a wooden cabin

Cosy fireplace in the living room

Fitted wardrobes and storage room

Second-hand property in excellent condition

Don't miss the opportunity to live in this exceptional home in Benalmádena. Contact us today to arrange a viewing.



+34 951 123 083 | +44 (0)330 179 8687 | info@idiliqestates.com Local 28, Edificio D, Centro de Negocios Puerta de Banús, N-340, Km 175, 29660 Nueva Andalucía

IDILIQ

ESTATES



IDILIQ

ESTATES

