



R4888219

📍 Fuengirola

REF# R4888219 265.000 €

BEDS

3

BATHS

2

BUILT

96 m²

Welcome to this spacious 3 bedroom, 2 bathroom apartment, located in the centre of Fuengirola, next to the fairgrounds and the Plaza de la Hispanidad. The property is conveniently located less than 10-minute walk from the Train Station, Playa de los Boliches and 15 from the Fuengirola Marina, surrounded by supermarkets, shops, restaurants and bars, as well as the Mercedes Labrador Music Institute and Conservatory and the municipal swimming pool.

Upon entering the property, we find the living room on the right, which is quite spacious. From there, we go out onto a terrace that overlooks a pedestrian street full of trees and facing west.

On the left is the fully furnished kitchen equipped with top-brand appliances. The rest area is separated from the living area by a corridor that leads to the three bedrooms. On the right, we find the master bedroom with an en-suite bathroom and a window overlooking the park.

On the left side of the house are the other two bedrooms and a bathroom that overlook a large and quiet patio. All bedrooms have a built-in wardrobe, and there is an additional one in the hallway. Also, both the living room and two of the bedrooms have a hot/cold split air conditioning system and climait windows.

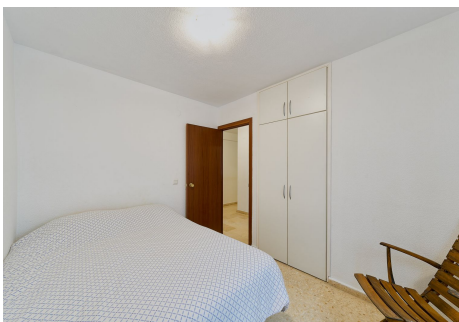
This community has a large outdoor pool for use during the summer season, and the house also has a storage room. Don't miss this great opportunity and contact us to visit what could be your next home. 3 of

+34 951 123 083 | +34 (0)330 179 8687 | info@idiliqestates.com Local 28, Edificio D, Centro de Negocios Puerta de Banús, N-340, Km 175, 29660 Nueva Andlucia

IDILIQ

ESTATES

the pictures are edited with computer so that you can project how the apartment will look after renovation and redecoration. Sold without furnitures. 6606 BCB



+34 951 123 083 | +44 (0)330 179 8687 | info@idiliqestates.com Local 28, Edificio D, Centro de Negocios Puerta de Banús, N-340, Km 175, 29660 Nueva Andalucía