



R4848931

 Mijas

REF# R4848931 1.495.000 €

BEDS

5

BATHS

4

BUILT

321 m<sup>2</sup>

PLOT

515 m<sup>2</sup>

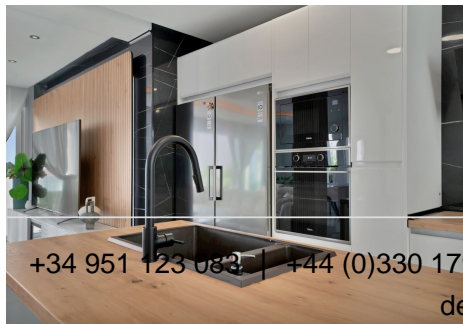
Luxurious Modern Villa with Panoramic Sea Views Step into the charm of this spectacular modern-designed villa, where every detail has been meticulously crafted to create an elegant and sophisticated home. From the moment you walk through its doors, you're enveloped in a sense of understated luxury and unparalleled comfort. GP1 This first-class property blends expansive, light-filled spaces with exquisite attention to detail, offering breathtaking sea views from every room on the main floor, creating an unforgettable visual experience at every turn. With over 100 m<sup>2</sup> of beautifully arranged basement space, this villa offers endless possibilities for creating a private gym, a home cinema, or even an entertainment area for guests. Inside, the property shines with its open, airy layout, where high-end finishes and contemporary design details come together to create a warm and refined atmosphere. Outside, the perfectly manicured gardens wrap the home in a green oasis, while the spacious pool invites you to relax under the sun in a private and exclusive setting. Just a short walk to the beach, it is the ideal retreat for those who seek a seamless connection with nature and the sea. Additionally, the villa boasts ample parking space, adding convenience to this luxurious haven. Every aspect of this villa has been designed to offer the ultimate in comfort, with a fresh and light-filled ambiance, making it a dream residence for those who seek the best in quality and lifestyle. GP1 \*The Abbreviated Informative Document is available. Expenses: Taxes (ITP or VAT + AJD) + notary and

+34 951 123 083 | +44 (0)330 179 8687 | info@idiliqestates.com Local 28, Edificio D, Centro de Negocios Puerta de Banús, N-340, Km 175, 29660 Nueva Andlucia

# IDILIQ

ESTATES

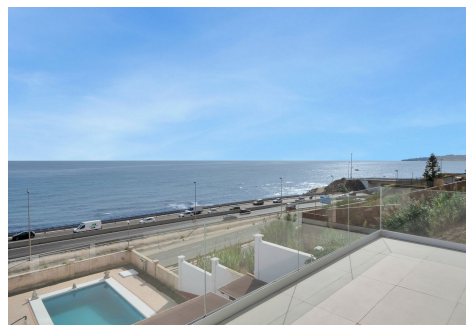
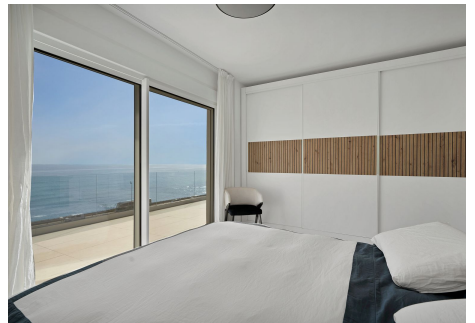
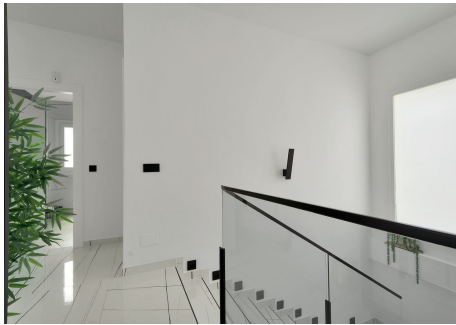
registration fees. GP1



+34 951 123 083 | +44 (0)330 179 8687 | [info@idiliqestates.com](mailto:info@idiliqestates.com) | Local 28 Edificio D, Centro de Negocios Puerta de Banús, N-340, Km 175, 29660 Nueva Andalucía

# IDILIQ

ESTATES



# IDILIQ

ESTATES

