



R5161681

 Torrenueva

REF# R5161681 558.000 €

BEDS

3

BATHS

2

BUILT

304 m²

PLOT

296 m²

Are you looking for a home where you can begin your next adventure? This property is more than just a house—it's a place where every corner is filled with possibilities, where your family can grow and create memories. Move-in ready, this home is perfect for those seeking a swift change without compromising on quality or comfort. Don't miss the chance to make this dream a reality!

What Awaits You?

Modern and Bright: Spacious, open areas with natural light flooding every room.

Tranquility: Situated in a quiet residential neighborhood, perfect for relaxing after a long day.

Thoughtful Design: Large bedrooms, a modern kitchen, and a living room designed to let you enjoy every moment.

Private Garden: An ideal space to unwind, host barbecues, or simply enjoy the outdoors.

Excellent Location: Just minutes away from key amenities like supermarkets, schools, and recreational areas.

2 Living rooms, a spacious modern kitchen, 3 large bedrooms, 2 bathrooms, 1 guest toilet, laundry room, large solarium, garage, garden, and bright open spaces.

+34 951 123 083 | +44 (0)330 179 8687 | info@idiliqestates.com Local 28, Edificio D, Centro de Negocios Puerta de Banús, N-340, Km 175, 29660 Nueva Andlucia

IDILIQ

ESTATES

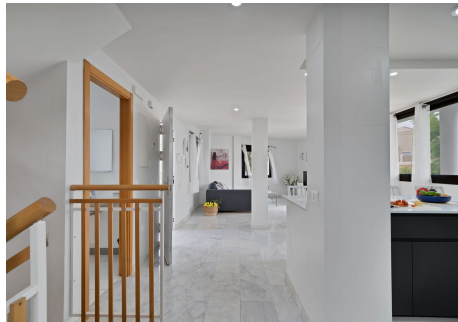
Why is This the Ideal Home?

This is more than bricks and mortar; it's a place where you and your family can flourish. Imagine waking up each day in a space that feels like home from the very first moment.

Come see your next home—it's waiting for you!

The abridged information document is available. Additional costs: Taxes (ITP or VAT + AJD) + Notary and registry fees.

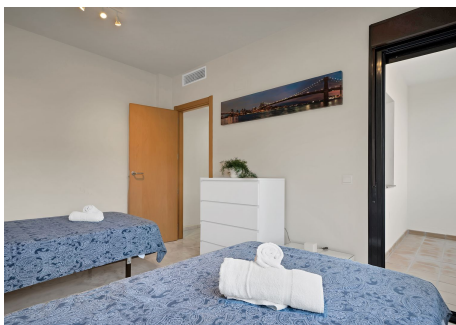
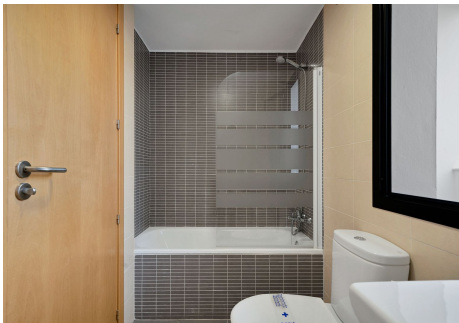
Come see it today! FTN



+34 951 123 083 | +44 (0)330 179 8687 | info@idiliqestates.com Local 28, Edificio D, Centro de Negocios Puerta de Banús, N-340, Km 175, 29660 Nueva Andlucia

IDILIQ

ESTATES



IDILIQ

ESTATES

