



R4793722

📍 Estepona

REF# R4793722 449.000 €

BEDS

3

BATHS

2

BUILT

362 m²

PLOT

250 m²

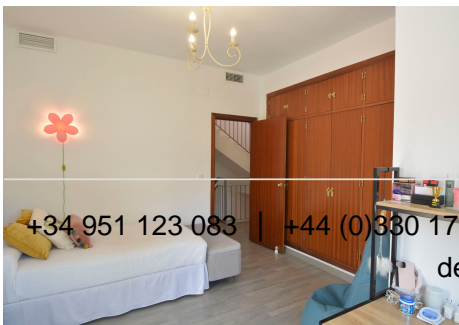
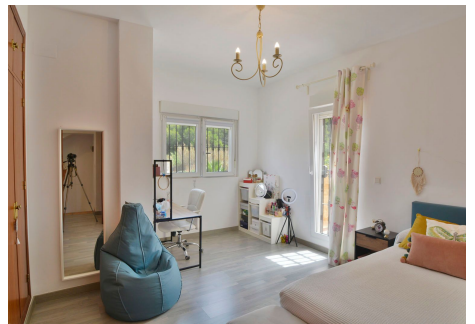
Fantastic townhouse located in Residencial La Palmera-Estepona, just 5 minutes from the Russian Orthodox Church and Selwo Aventura park. The best house in the complex, since it is on the corner and has open views to the pool, garden and mountains, with morning and afternoon sun, since it faces East, West and North. Being on the corner, it is wider and quieter, as it does not have a neighbor on one of the adjacent sides. This house distributed over two floors plus a large basement with a total area of 362m², has a space to install an elevator. The house consists of three very ample and bright bedrooms with built-in wardrobes, each of the rooms with private and sunny terraces, two full bathrooms, one of them en-suite and a guest toilet, on the second floor there is a studio that can be transformed into a fourth bedroom with a solarium, a large living room with the possibility of installing a fireplace with access to a 35m² porch where you can enjoy barbecues and family or friends meetings, a spacious fully fitted and equipped kitchen with a laundry room, a large 75m² basement with a large room where it can be used for multiple uses and a parking space for a vehicle and a motorcycle. Close to all amenities such as supermarkets, restaurants, pharmacy, Hospital, Schools, etc. Close to several golf courses such as Los Flamings golf and El Paraiso golf Club. Just 10 minutes from Puerto Banús and Estepona city center and 45 minutes from the International Airport of Málaga. Ideal house if you are looking for space and quietness. Come and visit! The

+34 951 123 083 | +44 (0)330 179 8687 | info@idiliqestates.com Local 28, Edificio D, Centro de Negocios Puerta de Banús, N-340, Km 175, 29660 Nueva Andlucia

IDILIQ

ESTATES

abbreviated information document is available to you. Expenses: Taxes (ITP or VAT+AJD) + Notarial and registration expenses. DS1



+34 951 123 083 | +44 (0)330 179 8687 | info@idiliqestates.com Local 28, Edificio D, Centro de Negocios Puerta de Banús, N-340, Km 175, 29660 Nueva Andalucía

IDILIQ

ESTATES

