



R4767268

📍 Marbella

REF# R4767268 4.995.000 €

BEDS

4

BATHS

4.5

BUILT

459 m²

TERRACE

203 m²

Located in the prestigious area of La Morera, Marbella East, this exquisite duplex penthouse offers the pinnacle of luxury living in Marbella, Malaga. Boasting a vast built area of 459m², the property features an interior space of 256m² complemented by expansive terraces totalling 203m². This splendid residence comprises four spacious bedrooms, each with its own en-suite bathroom, plus a guest toilet for added convenience. The penthouse is perfect for those who appreciate the finer things in life and seek a front line beach property with unparalleled amenities and stunning sea views. The penthouse is meticulously designed and fully furnished, with a fully fitted and equipped open-plan kitchen, creating a seamless flow into the dining and living areas. The interior is further enhanced by underfloor heating throughout, air conditioning, and double glazing, ensuring comfort in all seasons. The living area opens up to a private terrace, offering a Jacuzzi and panoramic views of the Mediterranean. Additionally, the property benefits from a Dolby Stereo Surround system, electric blinds, and glass doors, enhancing the luxury living experience. Residents will appreciate the extensive communal facilities including beautifully maintained gardens, a heated indoor pool, an outdoor pool, a gym, and 24-hour security with surveillance cameras for peace of mind. The gated community also provides a communal garage, lift access, a doorman service, and direct access to the beach. Practical features such as a storage room, laundry room, and fitted wardrobes

+34 951 123 083 | +44 (0)330 179 8687 | info@idiliqestates.com Local 28, Edificio D, Centro de Negocios Puerta de Banús, N-340, Km 175, 29660 Nueva Andlucia

IDILIQ

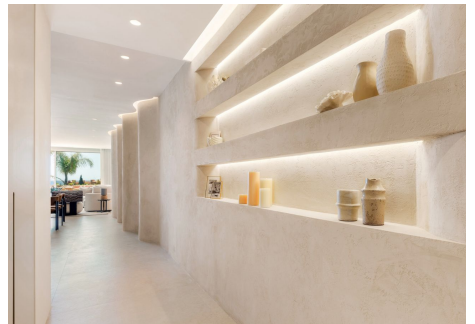
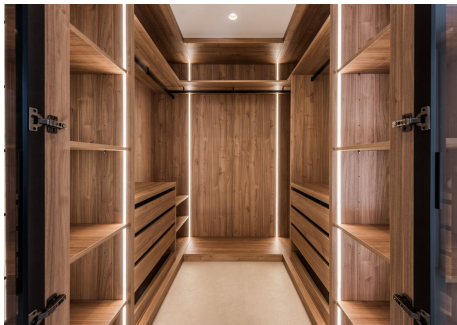
ESTATES

are included, and the property is in excellent condition following recent renovation and refurbishment. This stunning duplex penthouse is ideally situated near a variety of amenities, including shops, restaurants, schools, golf courses, and playgrounds, making it a perfect choice for families. Proximity to transport links, the town centre, and the port, along with direct sea access, further enhance the convenience and appeal of this property. Pets are allowed, and the residence boasts modern features such as Internet with fibre optic and athermics. Experience luxurious living with every conceivable comfort in this exceptional beachfront property.



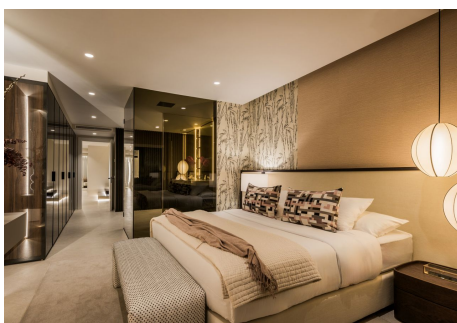
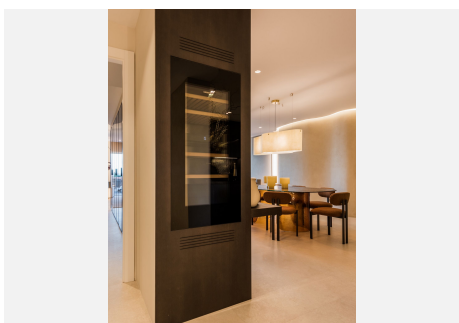
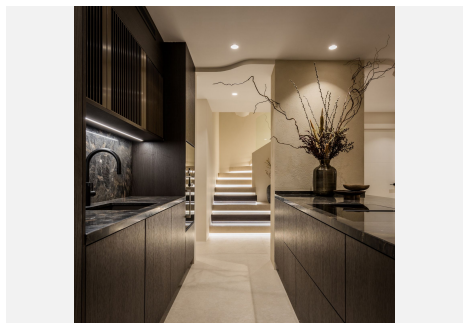
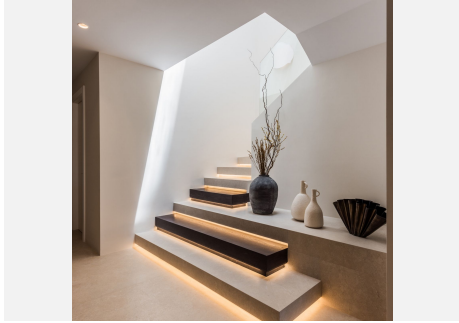
IDILIQ

ESTATES



IDILIQ

ESTATES



IDILIQ

ESTATES

