



R4778719

 Benalmadena Pueblo

REF# R4778719 255.000 €

BEDS

2

BATHS

2

BUILT

62 m<sup>2</sup>

PLOT

149 m<sup>2</sup>

We have the perfect home for you in an enviable location. This magnificent apartment with 2 bedrooms, 2 bathrooms, and a magnificent terrace offers you a life full of comforts and privileges. Located in a pleasant residential complex with swimming pools, a playground, and paddle tennis courts, this apartment gives you the opportunity to enjoy an active and healthy lifestyle. Imagine being able to relax by the pools on sunny days, while the little ones have fun in the playground. And for those sports enthusiasts, the paddle tennis courts are the perfect place to practice and socialize. Not only that, but you will be surrounded by spectacular views of the sports areas, the majestic Buddhist Stupa, and the butterfly garden. Every day, you can enjoy the serenity and beauty of these landscapes. Furthermore, the location of this apartment is simply perfect. You will have supermarkets, pharmacies, schools, restaurants, and a wide variety of services within reach to make your life more comfortable and practical. And with quick access to the highway, you will be connected to the rest of the city and its surroundings. If you are looking for a secure and profitable investment, this apartment is an opportunity you cannot miss. Its privileged location, along with all the nearby comforts and services, make it a unique opportunity for those seeking a guaranteed return on investment. Don't waste any more time and come visit this apartment that will captivate you with its charms. It's your chance to live the life you've always desired or make a smart investment! 2 Bedrooms 2

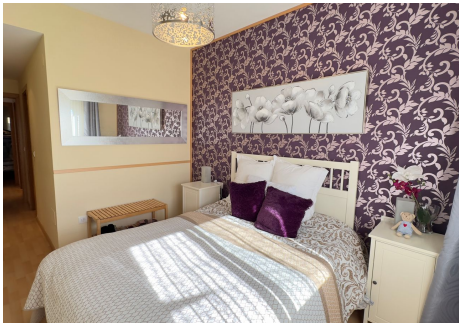
+34 951 123 083 | +44 (0)330 179 8687 | [info@idiliqestates.com](mailto:info@idiliqestates.com) Local 28, Edificio D, Centro de Negocios Puerta de Banús, N-340, Km 175, 29660 Nueva Andalucía



# IDILIQ

ESTATES

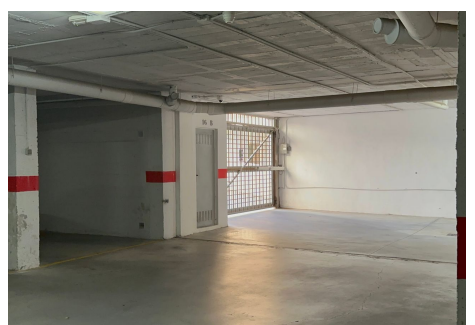
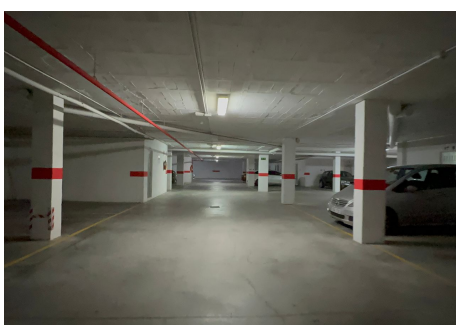
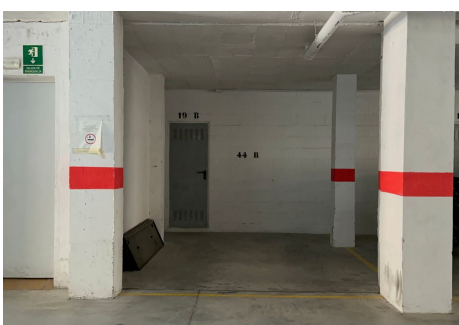
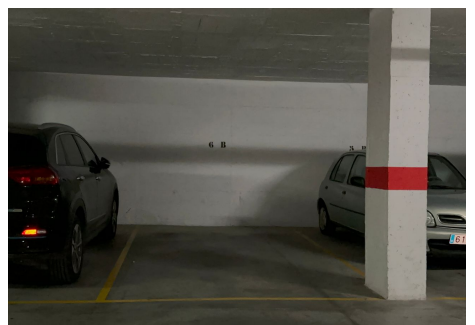
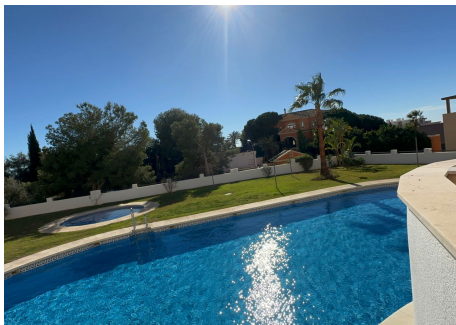
bathroomsLiving roomDining roomFully equipped KitchenTerrace2 parking spacesStorageChildren  
ParkCommunity poolsSea and buddhist stupa viewsPadel courtClose to all servicesLiftAir ConditioningLBB





# IDILIQ

ESTATES



# IDILIQ

ESTATES

