

# IDILIQ

ESTATES



R4876363

 Riviera del Sol

REF# R4876363 849.500 €

BEDS

5

BATHS

3.5

BUILT

265 m<sup>2</sup>

PLOT

617 m<sup>2</sup>

TERRACE

33 m<sup>2</sup>

SUPERB VILLA OVERLOOKING MIRAFLORES DRIVING RANGE WHICH ALSO HAS VIEWS ACROSS THE GOLF COURSE TO THE SEA. THE PROPERTY HAS FIVE DOUBLE BEDROOMS OF WHICH 3 ARE IN THE MAIN HOUSE AND 2 IN A SEPARATE GUEST APARTMENT. THE OUTSIDE SPACE IS LOW MAINTENANCE AND MAINLY TERRACED OR DECKED TO SHOWCASE THE FANTASTIC POOL AND AL FRESCO ENTERTAINING AREA. THE VILLA BRIEFLY COMPRISES: DOUBLE GARAGE SPACE WITH ELECTRIC DOOR FOR DIRECT ACCESS AT STREET LEVEL, STAIRS UP TO THE POOL, TERRACE AND TWO BEDROOM GUEST APARTMENT, A FEW FURTHER STAIRS LEAD UP TO THE MAIN HOUSE WHICH HAS A FEATURE ENTRANCE HALLWAY, LARGE OPEN PLAN LOUNGE AND DINING AREA, MODERN FITTED KITCHEN, GUEST TOILET/LAUNDRY ROOM, TERRACE WITH STUNNING VIEWS, ACCESS TO UPSTAIRS WHICH FEATURES THREE DOUBLE BEDROOMS EACH WITH FITTED WARDROBES, A GUEST BATHROOM AND EN-SUITE BATHROOM TO THE MASTER BEDROOM. ALL THE BEDROOMS ACCESS A FURTHER TERRACE THAT HAS PANORAMIC VIEWS OF THE GOLF TOWARDS THE SEA. THE GUEST APARTMENT IS TOTALLY SELF-CONTAINED WITH IT'S OWN LOUNGE, KITCHEN AND BATHROOM AS WELL AS THE TWO DOUBLE BEDROOMS. LOCATED WITHIN A 10 MINUTE WALK TO THE BEACH WITH A WIDE RANGE OF AMENITIES

+34 951 123 083 | +44 (0)330 179 8687 | [info@idiliqestates.com](mailto:info@idiliqestates.com) Local 28, Edificio D, Centro de Negocios Puerta de Banús, N-340, Km 175, 29660 Nueva Andlucia

# IDILIQ

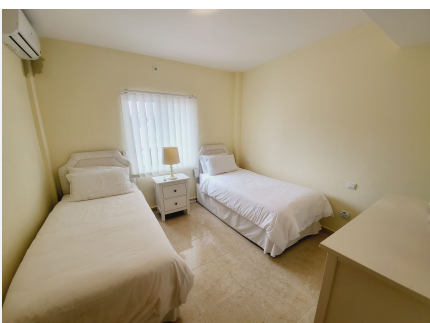
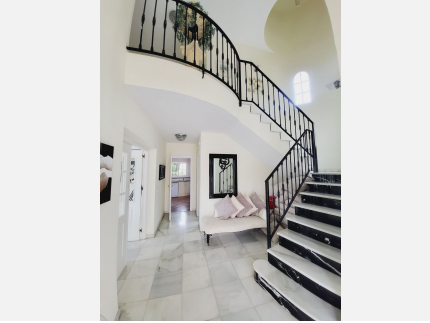
ESTATES

SITUATED WITHIN A 3 MINUTE WALK OF THE VILLA. LA CALA IS LESS THAN 5 MINUTES BY CAR ALTHOUGH THERE IS A LOCAL BUS SERVICE WITH A STOP 100m FROM THE PROPERTY. THIS TRULY IS A MAGNIFICENT PROPERTY WHICH NEEDS TO BE VIEWED TO FULLY APPRECIATE ALL IT HAS TO OFFER.



# IDILIQ

ESTATES



# IDILIQ

ESTATES

