



R4794145

📍 Benahavís

REF# R4794145 895.000 €

BEDS

4

BATHS

4.5

BUILT

354 m<sup>2</sup>

PLOT

95 m<sup>2</sup>

TERRACE

100 m<sup>2</sup>

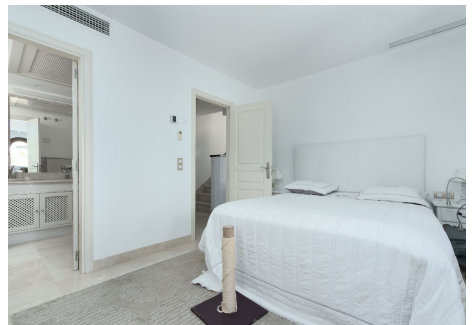
Located in the exclusive URBANIZATION, this sophisticated corner townhouse offers an incomparable life experience. The property has three bedrooms plus an additional room that can become a bedroom and four bathrooms, providing a comfortable space for both families and guests. The communal pool and garden create a peaceful atmosphere ideal for relaxing and enjoying free time. In addition, the property includes a private garage, ensuring a comfortable and secure parking. This townhouse has a number of modern amenities designed to improve the quality of life. The air conditioning and central heating system ensures a pleasant temperature throughout the year, while the fully equipped kitchen and fully furnished interiors facilitate a smooth move. The property also has a private terrace, perfect to enjoy partial views of the sea and the golf course. The high-speed internet connection and Wi-Fi connectivity, together with a telephone line, meet all communication needs. The location of this house is really privileged. Located close to a variety of services, it offers easy access to shops, restaurants and schools. The gated community adds an additional level of security and tranquility. The proximity to golf courses makes it an ideal choice for lovers of this sport. The property is in excellent condition, ensuring that it meets the highest standards of quality and comfort. In short, this corner townhouse combines luxury and convenience in a perfect way. Its privileged location, along with a variety of features and amenities, make it highly desirable. Whether you are looking

+34 951 123 083 | +44 (0)330 179 8687 | info@idiliqestates.com Local 28, Edificio D, Centro de Negocios Puerta de Banús, N-340, Km 175, 29660 Nueva Andlucia

# IDILIQ

ESTATES

for a family residence or a holiday shelter, this property promises an exceptional life experience.



# IDILIQ

ESTATES

