

IDILIQ

ESTATES



R4769917

 Benahavís

REF# R4769917 1.100.000 €

BEDS

3

BATHS

3

BUILT

300 m²

TERRACE

120 m²

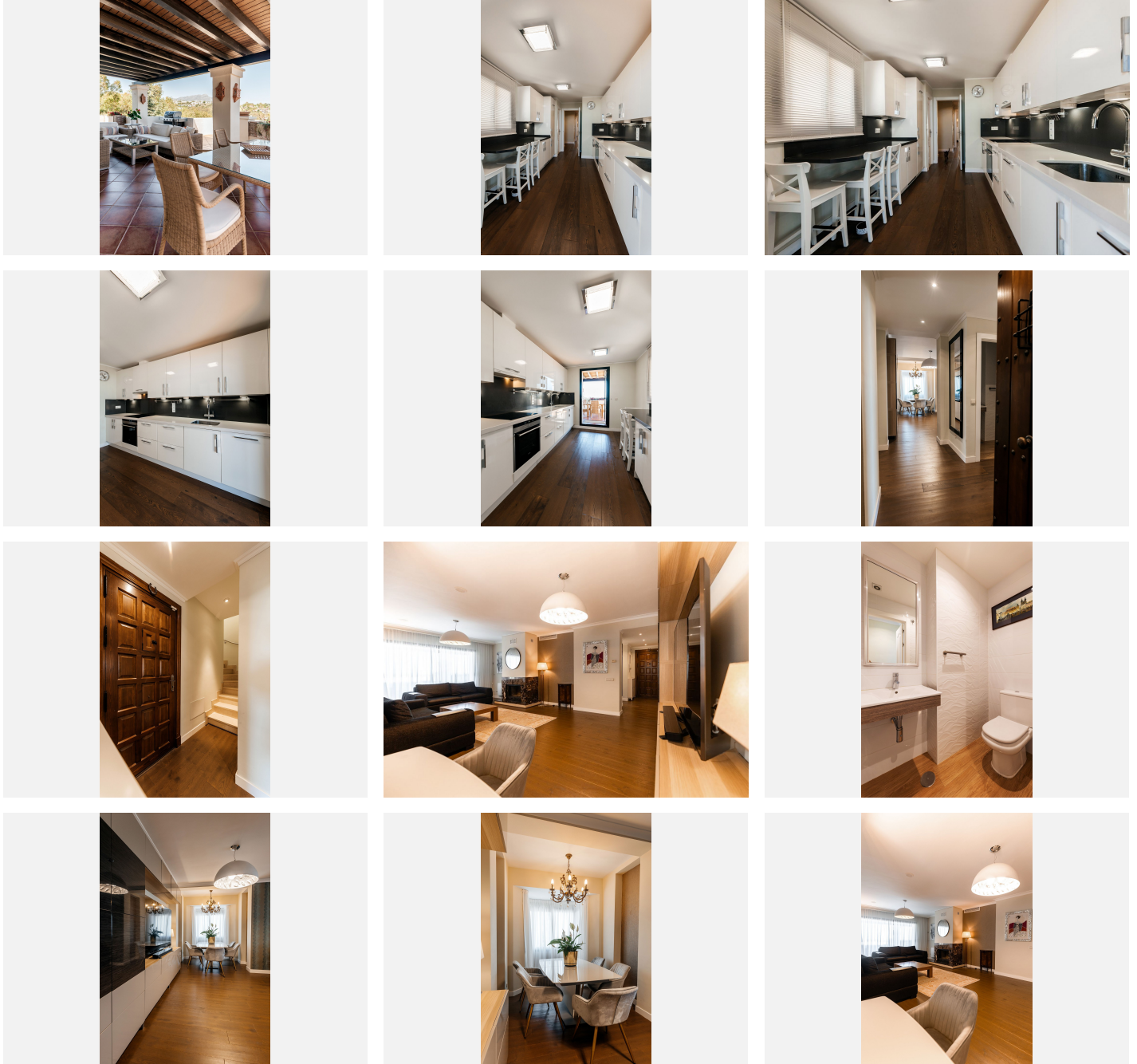
Welcome to this extraordinary property located in a community that redefines luxury and comfort. With five stunning outdoor pools, you will enjoy the warm Mediterranean climate in a paradisiacal setting. In addition, the complex has a fully equipped gym with state-of-the-art equipment, a heated indoor pool, sauna and jacuzzi, providing all the comforts for a healthy and relaxed lifestyle. By entering this magnificent residence, a bright and spacious entrance hall welcomes you to a world of elegance and style. The open plan design flows effortlessly into a beautiful kitchen with a central island, ideal for kitchen lovers and family meetings. The dining room and the living room offer a cozy and sophisticated atmosphere, perfect to create unforgettable moments with your loved ones. With four spacious bedrooms, each with access to porches and private terraces, you will have your own personal shelter to relax and disconnect from the outside world. Three of the bedrooms have en-suite bathrooms, highlighting a modern and functional design with the best finishes and comforts for your daily comfort. In addition, a dresser/office provides a versatile space that suits your individual needs. Located a few steps from the prestigious El Higueral Golf Course, you will have the opportunity to enjoy your passion for golf in an incomparable setting. The property includes two parking spaces, with capacity to accommodate up to three cars, and two storage rooms in the garage for your convenience. This exclusive community consists of 267 apartments distributed in 32 blocks, offering a quiet

+34 951 123 083 | +44 (0)330 179 8687 | info@idiliqestates.com Local 28, Edificio D, Centro de Negocios Puerta de Banús, N-340, Km 175, 29660 Nueva Andlucia

IDILIQ

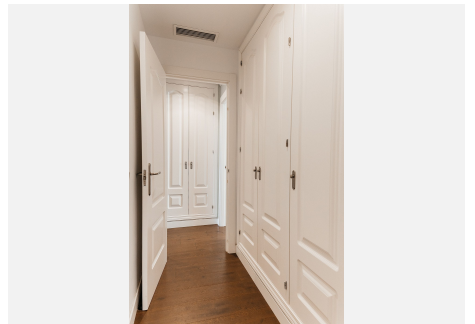
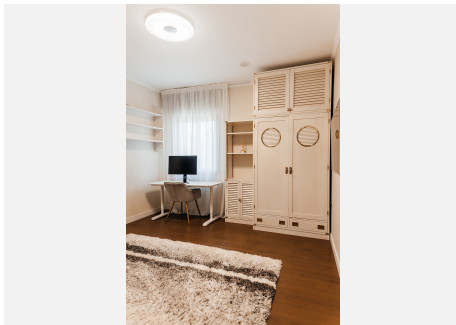
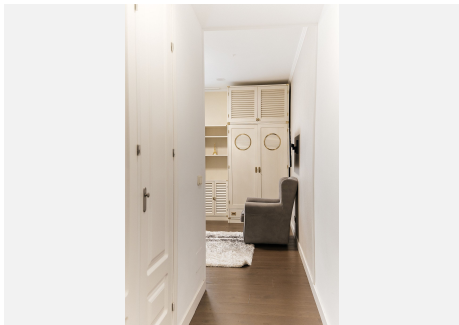
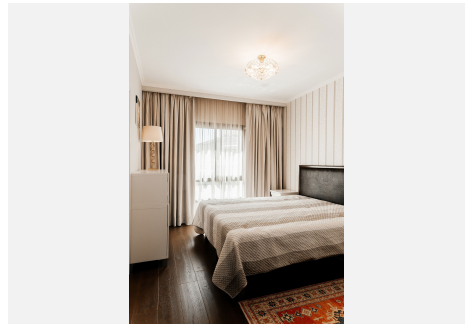
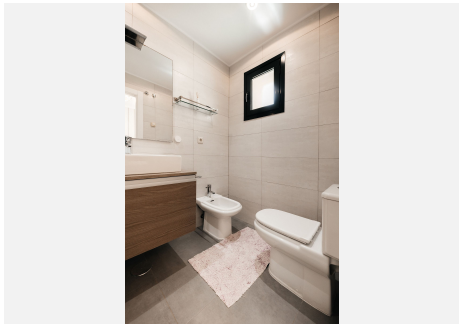
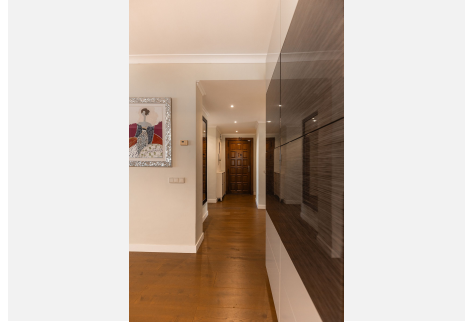
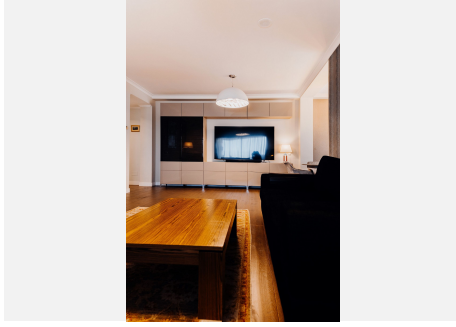
ESTATES

and private atmosphere where you can enjoy more than 50,000 m2 of lush tropical gardens, creating an oasis of serenity and natural beauty. This property is more than a residence, it is a lifestyle. Come and discover the perfect combination of luxury, comfort and privileged location.



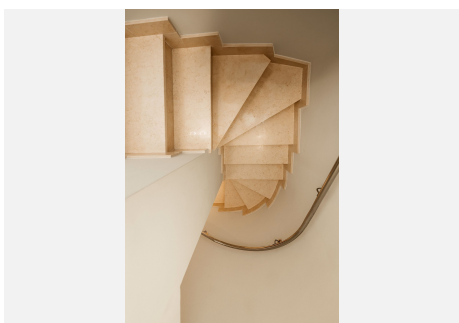
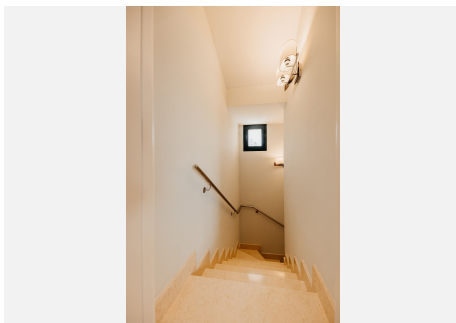
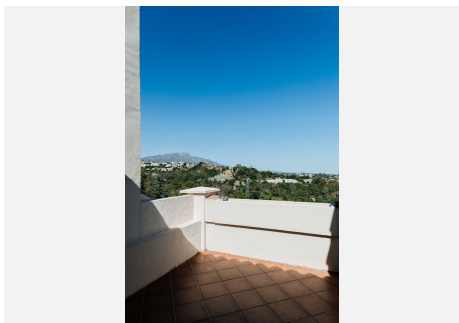
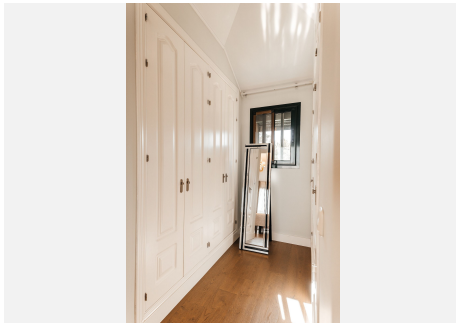
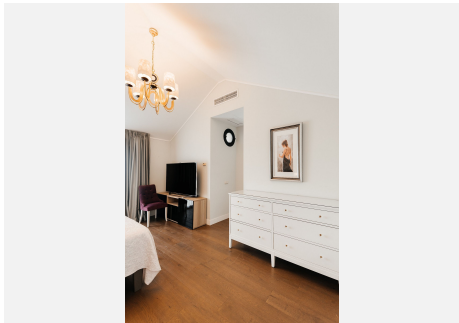
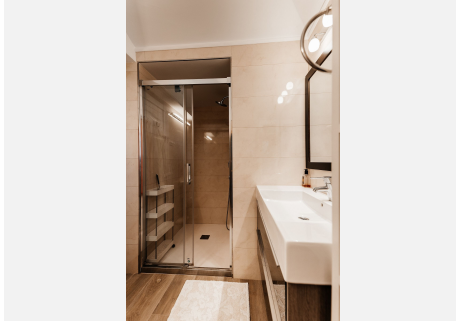
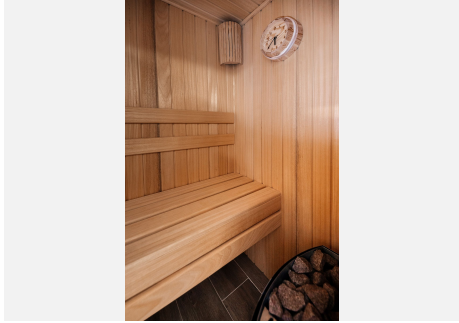
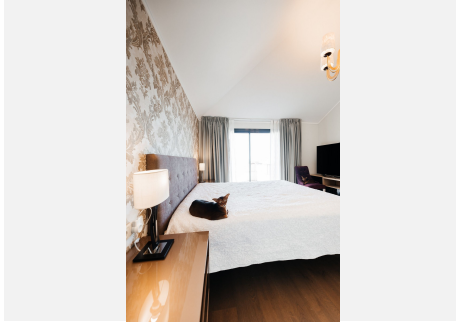
IDILIQ

ESTATES



IDILIQ

ESTATES



IDILIQ

ESTATES

