



TOWNHOUSE 4 BEDROOMS 3.5 BATHROOMS IN MANILVA

 Manilva

REF# R5417392 490.000 €

BEDS

4

BATHS

3.5

BUILT

138 m²

TERRACE

55 m²

Located within an exclusive contemporary development of just 46 townhouses, ideally situated only minutes from Sotogrande Marina, this exceptional property enjoys breathtaking views of the Mediterranean Sea, the Strait of Gibraltar and the African coastline.

Distributed over three levels, the home has been designed to maximise comfort, natural light and functionality.

The basement level features a storage room, private parking space, laundry area and direct access to the property.

The main floor offers a bright and spacious living-dining area connected to a fully fitted modern kitchen. This level also includes two bedrooms, a bathroom and a large terrace where residents can enjoy stunning sea views, Gibraltar and Africa.

IDILIQ

ESTATES

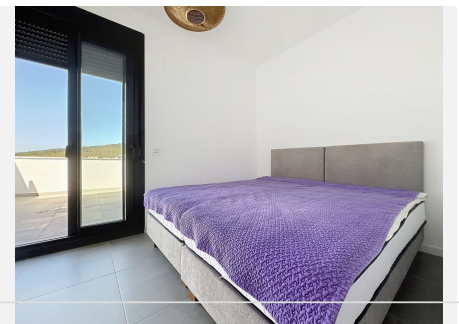
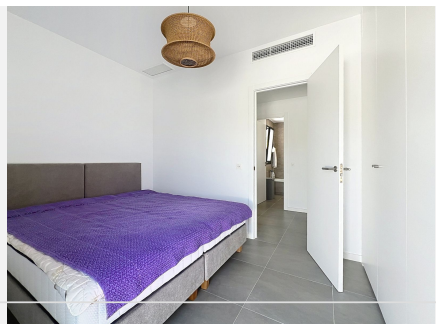
The upper floor comprises the master bedroom with en-suite bathroom, a fourth bedroom, two additional bathrooms and a generous terrace, creating the perfect space to relax and take in the spectacular surroundings.

With its south-west orientation, the property benefits from excellent sunlight and natural brightness throughout the year.

Residents enjoy premium communal facilities including landscaped gardens, a spectacular infinity pool, coworking space, fully equipped gym and an elegant jacuzzi.

The beach is within walking distance, while restaurants, shops and supermarkets are all close by. Puerto de la Duquesa Marina and Sotogrande are just a 5-minute drive away, Estepona can be reached in 10 minutes and Marbella in 30 minutes. Málaga-Costa del Sol International Airport is less than one hour away.

A privileged address in the heart of Andalusia, offering easy access to some of the region's most beautiful destinations, including Seville, Granada and Cádiz, allowing residents to fully embrace the Andalusian lifestyle.



IDILIQ

ESTATES

