



R5424466

📍 Manilva

REF# R5424466 695.000 €

BEDS

3

BATHS

3.5

BUILT

169 m<sup>2</sup>

PLOT

169 m<sup>2</sup>

TERRACE

101 m<sup>2</sup>

Discover this stunning semi-detached villa located in one of the most sought-after areas of the Costa del Sol, boasting breathtaking panoramic views of the Mediterranean Sea and the iconic Rock of Gibraltar.

From the moment you enter, you will be impressed by the property's brightness and spacious layout. The open-plan living and dining area, combined with a modern kitchen, features large floor-to-ceiling windows that frame the spectacular views and create an elegant yet welcoming atmosphere.

Offering 139 m<sup>2</sup> of built area, the property features three spacious bedrooms, each with its own en-suite bathroom, ensuring maximum comfort and privacy.

The outdoor areas are equally impressive, including sunny terraces, a private garden and a spectacular rooftop solarium with unrivalled views of the sea and Gibraltar.

The property also benefits from a large basement with multiple possibilities and two private underground parking spaces.

# IDILIQ

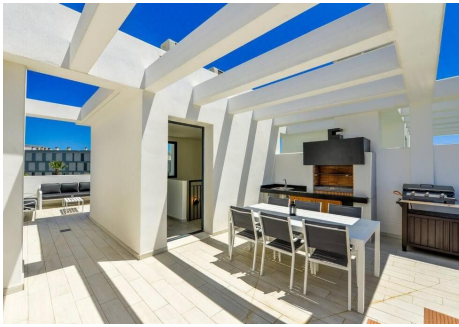
ESTATES

Residents enjoy beautifully landscaped communal gardens, a large swimming pool, a children's pool, a padel court and a children's play area.

Ideally located close to unspoilt beaches, La Duquesa Marina and the prestigious Sotogrande Marina, the villa is only 15 minutes from Estepona and approximately 50 minutes from Málaga International Airport.

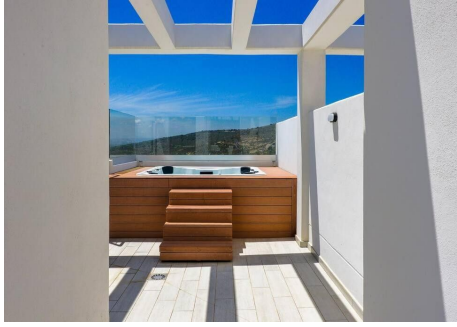
A rare opportunity combining comfort, contemporary design and an exceptional location to fully embrace the Mediterranean lifestyle.

The property also holds a tourist rental licence, making it an excellent investment opportunity.



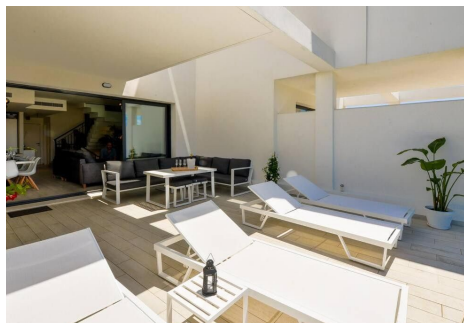
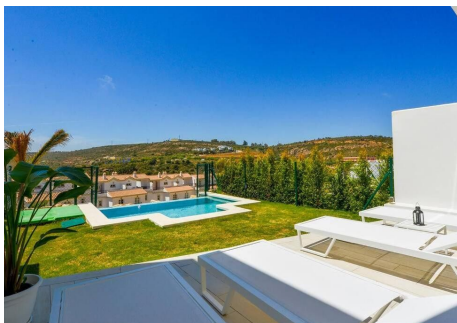
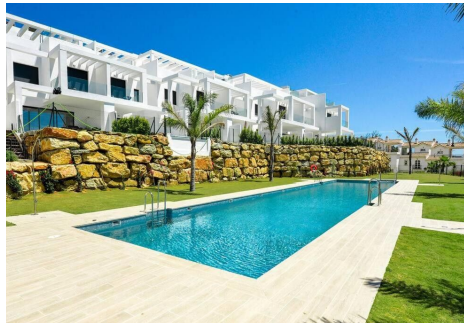
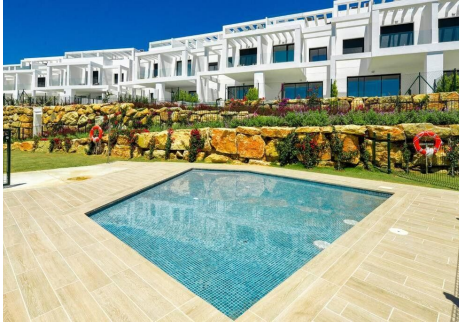
# IDILIQ

ESTATES



# IDILIQ

ESTATES



# IDILIQ

ESTATES

