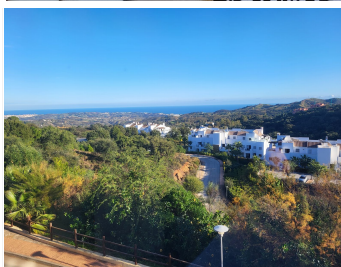
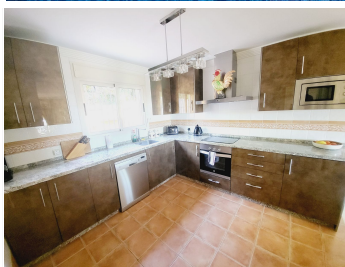


IDILIQ

ESTATES



R4217206

📍 La Mairena

REF# R4217206 495.000 €

BEDS

4

BATHS

3.5

BUILT

199 m²

TERRACE

34 m²

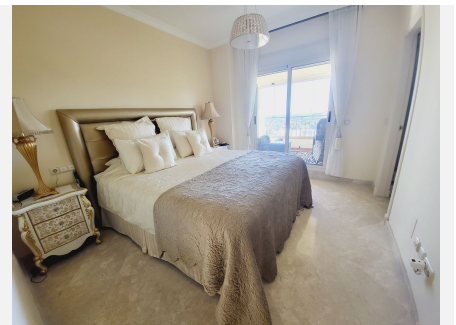
SUPERB CORNER TOWNHOUSE SITUATED IN THE MUCH SOUGHT AFTER EL VICARIO COMPLEX WHICH IS NESTLED IN THE STUNNING LA MAIRENA DEVELOPMENT IN THE OJEN COUTRYSIDE. ENJOYING FANTASTIC PANORAMIC VIEWS FROM THE IDYLIC LOCATION, THIS LUXURY PROPERTY IS ONLY A SHORT 10 MINUTE DRIVE TO EITHER EL VIRIA OR LA CALA DE MIJAS WITH THEIR WIDE RANGE OF AMENITIES AND STUNNING BEACHES. THE ACCOMMODATION IS EXTREMELY LIGHT AND SPACIOUS WITH A DISTRIBUTION OVER THREE LEVELS AS FOLLOWS: LOWER FLOOR - DOUBLE GARAGE SPACE, STORAGE ROOM, SECURE ENTRANCE LEADING TO 4TH DOUBLE GUEST BEDROOM AND SEPARATE GUEST BATHROOM/UTILITY. STAIRS LEADING TO: GROUND FLOOR - HUGE OPEN PLAN LOUNGE / DINING / LUXURY FITTED KITCHEN AND SEPARATE GUEST CLOAKROOM. MAIN ENTRANCE LEADING TO REAR/SIDE PATIO AND GIVING ACCESS TO THE COMMUNAL POOL AND GARDENS. DOUBLE PATIO DOORS LEAD TO A LARGE SUNNY TERRACE WITH ROOM TO BOTH DINE AND RELAX WHILST ENJOYING THE INCREDIBLE VIEWS. THE TERRACE HAS GLASS CURTAINS TO ALLOW ALL ROUND ENJOYMENT OF THIS GREAT SPACE. STAIRS LEADING TO: UPPER FLOOR - TWO GENEROUS DOUBLE GUEST BEDROOMS SHARING A GUEST BATHROOM WITH WALK-IN SHOWER, MASTER SUITE WITH

+34 951 123 083 | +44 (0)330 179 8687 | info@idiligestates.com Local 28, Edificio D, Centro de Negocios Puerta de Banús, N-340, Km 175, 29660 Nueva Andlucia

IDILIQ

ESTATES

FEATURE WALK-IN DRESSING ROOM AND ENSUITE BATHROOM WITH BOTH A BATH AND WALK-IN SHOWER. THE MASTER SUITE HAS A PRIVATE TERRACE WHICH HAS GLASS CURTAINS AND INCREDIBLE VIEWS DOWN TO THE COAST. FINISHED TO THE HIGHEST STANDARDS OF QUALITY WITH MARBLE FITTINGS THROUGHOUT, AIR-CONDITIONING, CORNICING AND BEING IMMACULATEDLY PRESENTED AND MUCH IMPROVED BY THE PRESENT OWNERS, THIS PROPERTY NEEDS TO BE VIEWED TO FULLY APPRECIATE ALL THAT IT HAS TO OFFER. THE COMPLEX IS EXCEPTIONALLY WELL MAINTAINED WITH TWO POOLS PLUS AN ADDITIONAL CHILDREN'S POOL AND ALSO PADDLE TENNIS FACILITIES. LA MAIRENA IS AN EXCLUSIVE URBANISATION SET HIGH ABOVE THE MIJAS AND MARBELLA COASTLINE AND REKNOWNED FOR IT'S INTERNATIONAL GERMAN SCHOOL, ECOS COLLEGE AND THE HOFSAESS TENNIS ACADEMY.



IDILIQ

ESTATES

