



TOWNHOUSE 2 BEDROOMS 2.5 BATHROOMS IN BENALMADENA

 Benalmadena

REF# R5307073 469.000 €

BEDS

2

BATHS

2.5

BUILT

103 m²

TERRACE

14 m²

Situated in a prime frontline position in Carvajal, this townhouse manages the perfect combination of impressive sea views and tranquility offering a sense of calm.

The moment you step through the front door, the sea makes its presence known. From the entrance hall, your eyes are drawn straight through the living space to the blue of the horizon.

The Main Level: To the right sits a practical, independent kitchen. As you move through, the space opens up into a bright dining and lounge area, complete with a cozy wood-burning fireplace for those cooler winter evenings. There is also a conveniently placed guest toilet on this level.

The Terrace: The lounge leads directly onto a sunny private terrace. This is the heart of the home, offering panoramic views that stretch across the coastline all the way to through Fuengirola bay and beyond.

The Upper Floor: Heading upstairs, the layout continues to prioritize that connection to the coast: The Master Suite: A generous space with its own private terrace and fitted wardrobes. Another "wow" factor, is the ensuite shower room—it's been designed so you are looking directly out at the sea while you start your day. It's a unique, thoughtful touch that sets this property apart. A second well-sized bedroom also features

+34 951 123 083 | +44 (0)330 179 8687 | info@idiliqestates.com Local 28, Edificio D, Centro de Negocios Puerta de Banús, N-340, Km 175, 29660 Nueva Andlucia

IDILIQ

ESTATES

fitted wardrobes, served by a full guest bathroom.

This property comes with two independent parking spaces. These are legally separate properties but are included in the sale, offering massive added value and convenience. You'll also find a dedicated underground storage facility, perfect for beach gear and bikes.

Location-wise, you're sitting on the edge of some of the best beaches in the region. You have your pick of excellent chiringuitos and scenic seafront walks right on your doorstep. The Carvajal train station is just a short walk away, providing an easy, direct link to Malaga Airport, the city center, and the shopping hubs of Plaza Mayor and Benalmadena. The complex features a communal pool and garden. Viewings are highly recommended to truly appreciate those views and location.

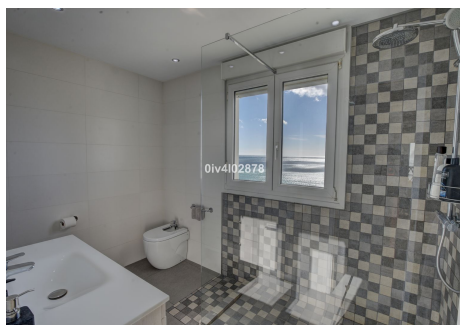
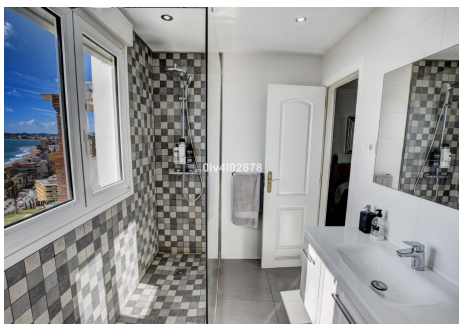
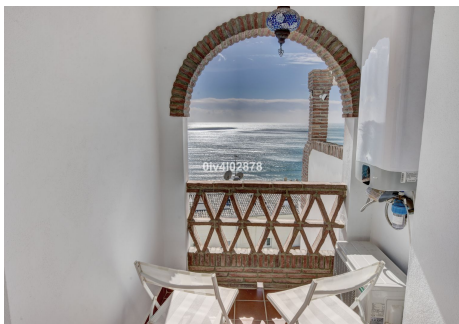
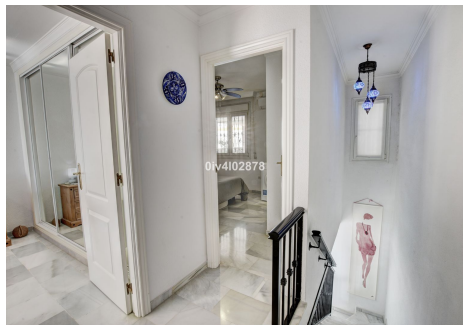
DEED: Total Built Area 103.26m² of which 14.26m² is terrace, Year of Build: 2000, Aprox fees IBI :900€ per year – Basura 290€ per year – Community 96€ per month/ CEE:Energy Consumption Rating &CO₂ Emissions Rating Pending

The stated data is merely informative and has no contractual value. These details may be subject to errors, price changes, omissions, availability and/or withdrawal from the market without prior notice. The indicated price does not include the expenses inherent to the purchase of real estate according to current laws (ITP or VAT, notary expenses, registry expenses, conveyancing etc)



IDILIQ

ESTATES



IDILIQ

ESTATES

