

R4761073

📍 Benahavís

REF# R4761073 1.795.000 €

BEDS	BATHS	BUILT	PLOT	TERRACE
5	5.5	639 m²	939 m²	41 m²

This contemporary south-facing villa, located in the picturesque area of Benahavis, Malaga, offers an exquisite blend of luxury and comfort. The property comprises five bedrooms and five bathrooms, alongside an additional toilet, providing ample space for family living or entertaining guests. The villa spans a generous 639m², with an interior of 543m² and a terrace of 41m², all set on a plot of 939m². The villa is part of a gated community with 24-hour security service, ensuring peace of mind for residents.

The villa boasts a range of high-end features designed for modern living. The fully fitted kitchen is equipped with top-of-the-line appliances, and the living spaces include a cosy fireplace and air conditioning for year-round comfort. The bathrooms benefit from underfloor heating, adding a touch of luxury. The property also includes a private terrace with stunning panoramic views of the Mediterranean Sea, La Concha, and the surrounding countryside and mountains.

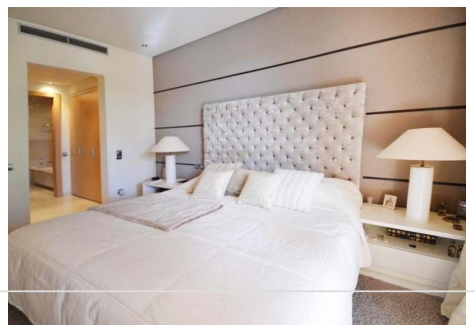
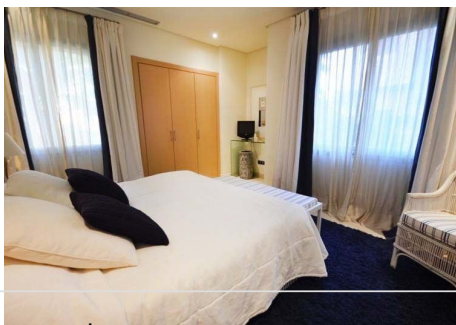
Outdoor living is a key aspect of this property, with a private and heated indoor pool, as well as beautifully maintained gardens. The community takes care of the garden and pool maintenance, ensuring they are

IDILIQ

ESTATES

always in pristine condition. The villa also features a covered terrace, perfect for al fresco dining or enjoying the serene views. For entertainment, there is a games room with a bar, a cinema, and a gym, catering to a variety of leisure activities.

Additional amenities include private parking for two cars and extra storage space. The villa's location is highly convenient, being just 7 km from the bustling areas of Puerto Banus and Marbella, and only a 10-minute walk to Benahavis Village. Residents will also appreciate the proximity to local schools and ports, making it an ideal choice for families or those seeking a tranquil yet accessible retreat.



IDILIQ

ESTATES

