

IDILIQ

ESTATES



R4603810

📍 Atalaya

REF# R4603810 2.200.000 €

BEDS

4

BATHS

5.5

BUILT

538 m²

PLOT

775 m²

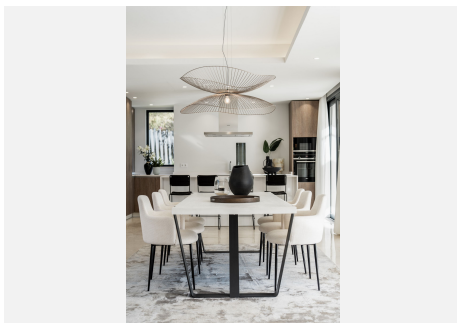
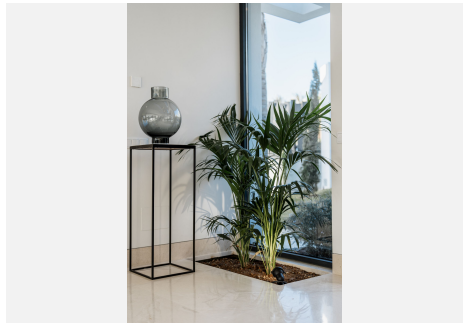
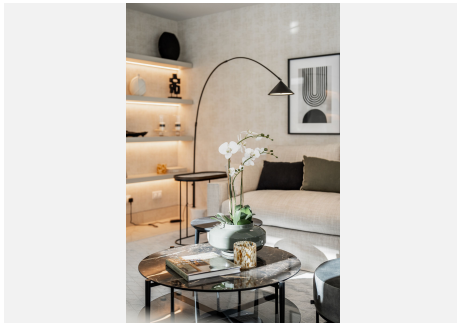
TERRACE

100 m²

This luxurious modern-style villa located between Marbella and Estepona, a five-minute walk from the Campanario Golf & Country Club and a ten-minute drive from the center of Puerto Banús. Completion of the works is expected between June 2023. The properties are designed by a renowned local architect, built with top quality materials and specifications, offering the perfect combination of luxury and comfort. Plot surfaces of 775 m² and interiors from 330 m² with porches and terraces of more than 100 m². Four bedrooms and five bathrooms, large living room and fully equipped designer kitchen, underfloor heating on the ground and first floors, air conditioning, private pool and garage for two vehicles.

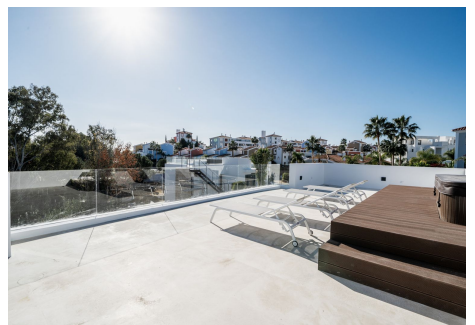
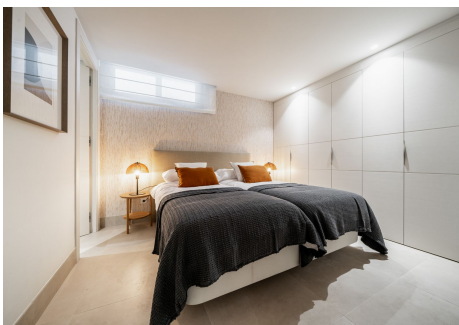
IDILIQ

ESTATES



IDILIQ

ESTATES



IDILIQ

ESTATES

