



R4686817

📍 Guadalmina Alta

REF# R4686817 1.150.000 €

BEDS

3

BATHS

3.5

BUILT

291 m²

PLOT

330 m²

TERRACE

142 m²

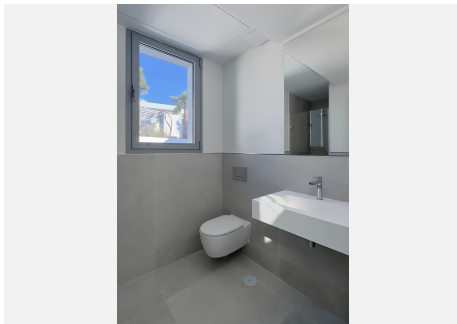
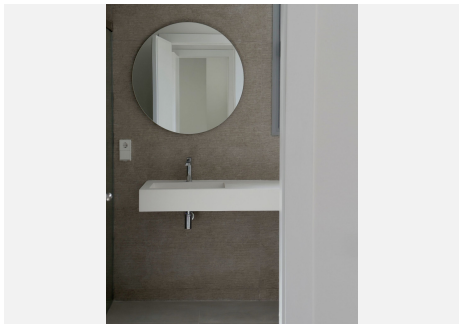
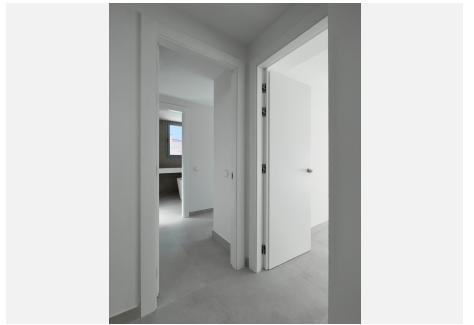
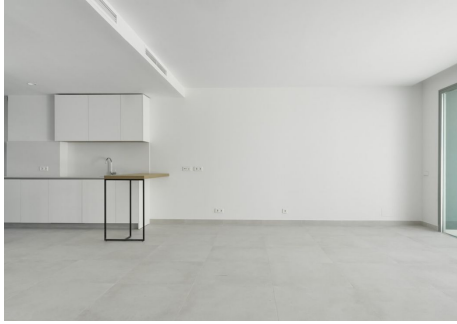
South facing 3 Bedroom semi-detached villa with possibility to add the 4th bedroom in the basement has 3 levels plus the roof top terrace. Entering the property there is an entrance hall with a closet and guest toilet, an open plan kitchen with a spacious living room that leads you to the terrace and the garden of the property. On the first level there are 3 bedrooms with two bathrooms: Master bedroom with ensuite bathroom has a private access to the terrace that enjoys the panoramic country and mountain view, second bedroom also has a private access to the terrace and enjoys the same view as masters and shares a bathroom with the third bedroom. The rooftop terrace offers spectacular 360 degree view and has its own swimming pool and a pre-installation for the BBQ. The basement has a big room and needs to be finished by the new owner where the new owner just needs to use the imagination what to do: additional bedroom can be done as well as a cinema/gaming room with a wine cellar. There is a laundry room, a storage room and a room where bathroom can be made. The property has a garage for two cars. This new complex of 23 semi-detached villas in a contemporary style designed by the prestigious Gonzalez & Jacobson architecture studio, using the highest quality standards. The urbanisation has great location, privileged views and respect for the environment. Only 5. minutes walk to San Pedro Center and 25 minutes was to the beach. It is the ideal place to live and enjoy family and friends in a unique, comfortable and safe space. Top quality

+34 951 123 083 | +44 (0)330 179 8687 | info@idiliqestates.com Local 28, Edificio D, Centro de Negocios Puerta de Banús, N-340, Km 175, 29660 Nueva Andlucia

IDILIQ

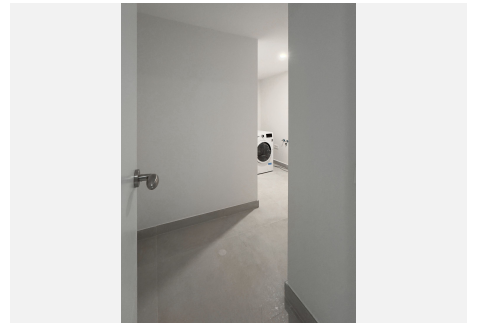
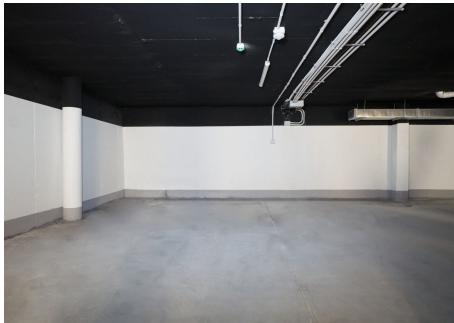
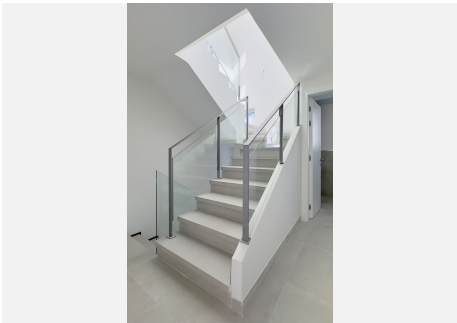
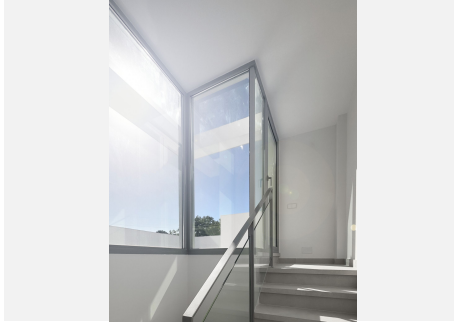
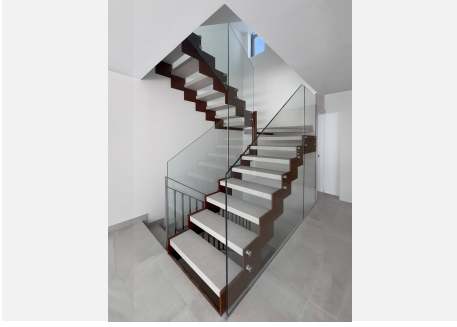
ESTATES

materials with the most recognized brands in the sector and high energy efficiency are details that make the difference. Common areas with swimming pool for children and adults, Co-Living area with work and relaxation areas. Designed by Rodolfo Jacobson's architecture studio, one of the most prestigious on the Costa del Sol, and with the collaboration of top-level suppliers such as Gunni & Trentino, APPLE or NEFF.



IDILIQ

ESTATES



IDILIQ

ESTATES

