

# IDILIQ

ESTATES



R4869343

 Benalmadena Costa

REF# R4869343 405.000 €

BEDS

2

BATHS

2

BUILT

132 m<sup>2</sup>

TERRACE

55 m<sup>2</sup>

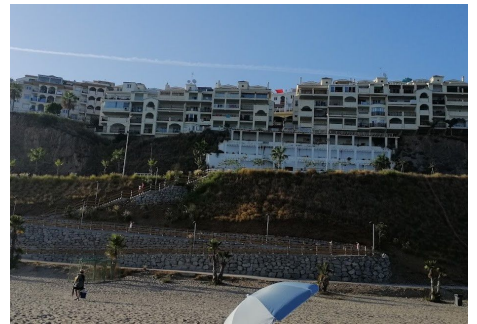
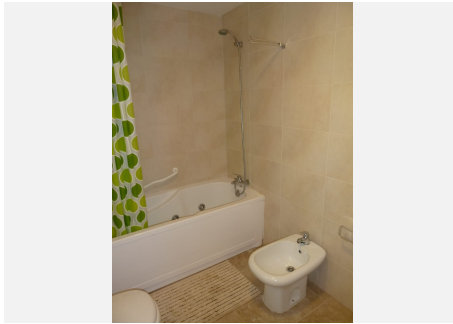
This beachfront apartment is offering a stunning panoramic sea view with a south facing balcony, conveniently located just a short walk from the beach. Whether you are seeking a permanent residence or a vacation getaway, this property presents an excellent opportunity with significant potential. It also serves as a strong investment option due to its favorable rental prospects. The apartment features two spacious bedrooms and one and a half bathrooms, equipped with a split air conditioning system for both heating and cooling in every room. Additional highlights include a large patio with a barbecue area, a covered storage shed, and an underground parking space. Other amenities consist of a security alarm and fiber optic internet. Balcón de Benalmádena is a popular residential community ideally situated near Carvajal Beach. The complex offers a swimming pool area with panoramic sea views, a grassed area around it and a small plunge pool for the kids. This prime location provides easy access to key areas, including Benalmádena's center, featuring a beautiful port and numerous attractions. Additionally, the surrounding coastline is home to several golf courses, such as Torrequebrada Golf, which is approximately a 12-minute drive away, and the renowned La Cala Golf Club, about a 30-minute drive from the apartment. The beach Playa de Tajo de la Soga is located 900 meters from the apartment en Carvajal and so is playa de Carvajal with several beach bars and chiringuitos. Additionally, for a pleasant nature walk, El Sendero del Mar is only 1.6 km from

+34 951 123 083 | +44 (0)330 179 8687 | info@idiliqestates.com Local 28, Edificio D, Centro de Negocios Puerta de Banús, N-340, Km 175, 29660 Nueva Andlucia

# IDILIQ

ESTATES

the apartment. Malaga Airport is just a 30-minute drive or a 40-minute train ride away, providing convenient travel options. The nearest train station is Carvajal, located 1.1 km from the apartment, with trains to Malaga departing every 30 minutes.





# IDILIQ

ESTATES

