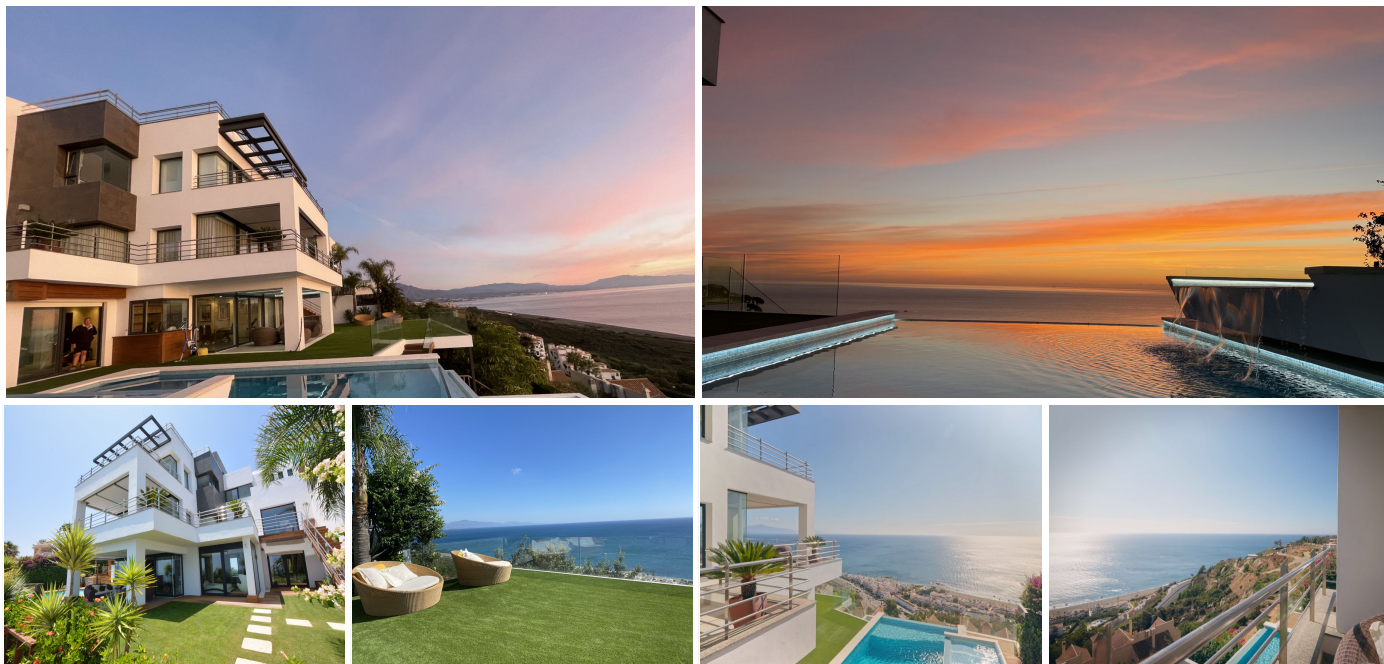


IDILIQ

ESTATES



R4743436

📍 Manilva

REF# R4743436 3.295.000 €

BEDS

5

BATHS

7

BUILT

825 m²

PLOT

1200 m²

TERRACE

340 m²

Experience this magnificent contemporary 5-bedroom villa nestled within the prestigious and serene residential enclave of La Paloma. Boasting panoramic vistas of the Mediterranean Sea with captivating views of Africa and Gibraltar, this residence offers a tranquil retreat just moments away from the beach. Thoughtfully designed with meticulous attention to detail, this villa showcases cutting-edge technology and is crafted with high quality materials. Revel in its exquisite features, including a cinema, a gym, a sauna, a bodega, and a sumptuous heated infinity pool that seamlessly blends with the horizon. An elevator ensures effortless access to each level, while solar power underscores its commitment to sustainability. This exceptional property also includes a separate nanny or guest apartment, providing privacy and convenience for visitors. La Paloma in Manilva offers a charming setting with its serene atmosphere, enhanced security measures, and well-maintained streets and park areas. Its prime location between Estepona and Sotogrande, both reachable with a short 15-minute drive, adds to its allure. Residents can easily access the nearby beach, while a brief 15-minute drive opens the doors to some of Spain's most prestigious golf clubs, such as Real Club Valderrama, Finca Cortesin, and La Reserva Sotogrande. With its relaxed ambiance and convenient amenities, La Paloma provides an inviting environment for those seeking a peaceful yet well-connected lifestyle on the Costa del Sol. For those seeking to build their dream home, we also offer empty

+34 951 123 083 | +44 (0)330 179 8687 | info@idiliqestates.com Local 28, Edificio D, Centro de Negocios Puerta de Banús, N-340, Km 175, 29660 Nueva Andlucia

IDILIQ

ESTATES

construction plots boasting panoramic sea views, providing an exceptional opportunity to create a bespoke living space in this idyllic locale.

