



R4357756

📍 Benahavís

REF# R4357756 2.250.000 €

BEDS

4

BATHS

4

BUILT

556 m²

PLOT

2430 m²

TERRACE

113 m²

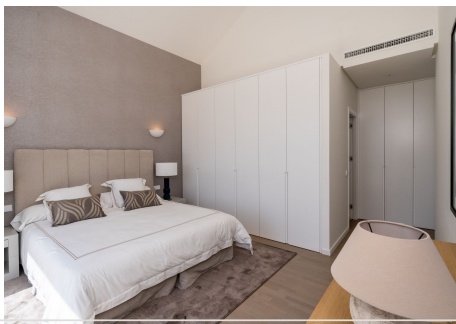
This Beautiful property is located in the exclusive gated community of Monte Mayor offers 24H security in a fantastic natural environment with beautiful surroundings and excellent sea views. It is just a 15 minute drive to the coast and popular resorts like Puerto Banus and Marbella are close too. This contemporary Andalusian style villa has an elegant access road which leads to the main entrance and the garage in the basement. The open plan layout of the living area comprises a double-height ceiling, two sitting areas, a dining area, a modern and efficient Italian kitchen fully equipped with German appliances, an office space area and a very elegant staircase. There is pre-installation foreseen for a future elevator. The living and dining areas have large sliding windows which give access to the large, partly covered, terraces where you have the most fantastic mountain and sea views. The sitting area inside has a fireplace too. The master bedroom is completely private with large fitted wardrobes, en-suite bathroom area, a walk-in shower, a free standing bath, double washbasins and a separate toilet. Large windows give access to a covered terrace to enjoy the panoramic views. This level also accommodates the guest bathroom and the multi-purpose/laundry room. On the upper floor there are three guest bedrooms all with fully equipped en-suite bathrooms. Two bedrooms have separate large terraces perfectly suited for sunbathing. All have large windows and fitted wardrobes. The living area as well as the bedrooms have underfloor heating throughout

+34 951 123 083 | +44 (0)330 179 8687 | info@idiliqestates.com Local 28, Edificio D, Centro de Negocios Puerta de Banús, N-340, Km 175, 29660 Nueva Andlucia

IDILIQ

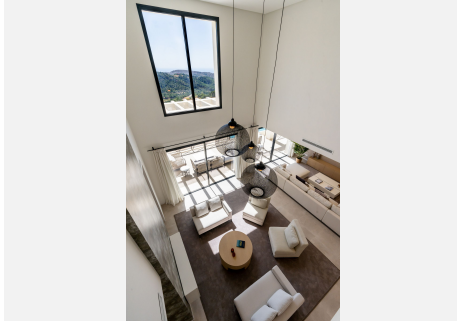
ESTATES

for the colder days and individually controlled air-conditioning. From the terraces on the main level, you have two staircases leading down to the pool level and the garden with unbeatable panoramic views. Downstairs the basement consists of a four car garage, a future laundry room, and a large machine room, which houses the heating and cooling equipment, the water storage tanks and the pool equipment. The very big garage space can be divided in future to accommodate a tv/film room, a gymnasium, extra bedrooms or an apartment with direct access to the pool. In the garden you will find a large infinity pool and a wood decked terrace area. fully landscaped areas with an automatic irrigation system.



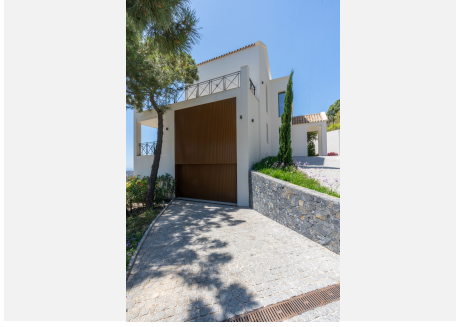
IDILIQ

ESTATES



IDILIQ

ESTATES



IDILIQ

ESTATES

