



R5217943

📍 Málaga

REF# R5217943 1.560.000 €

BEDS

3

BATHS

2

BUILT

191 m²

Exclusive seaside property located on the iconic Alameda de Colón, one of the most distinguished addresses in Málaga. Situated on the seventh floor, this unique property offers uninterrupted and direct views of the Mediterranean, blending elegance, comfort, and an unbeatable location.

With a built area of 191 m², the home has been designed to provide spaciousness, brightness, and functionality in each of its areas. The main area consists of a large living room with three large windows that flood the space with natural light and provide direct access to a private terrace from which to admire the sea and the city.

The open-plan kitchen, equipped with high-end appliances from the Neff brand, harmoniously integrates into the living area, creating a modern and sophisticated atmosphere. It also features an independent laundry room with a washer and dryer.

The sleeping area comprises three bedrooms and two bathrooms. The master suite, spacious and bright, includes an elegant dressing room, a private bathroom, and spectacular sea views, becoming a refuge of serenity and style. All three bedrooms feature ceiling fans, and the entire home is equipped with a centralized air conditioning system that ensures comfort year-round.

The building, representative and carefully maintained, features two elevators and concierge service, offering  
+34 951 123 083 | +34 (0)330 179 8687 | [info@idiliqestates.com](mailto:info@idiliqestates.com) Local 28, Edificio D, Centro de Negocios Puerta  
de Banús, N-340, Km 175, 29660 Nueva Andalucía

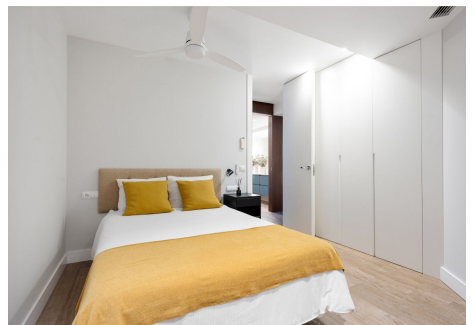
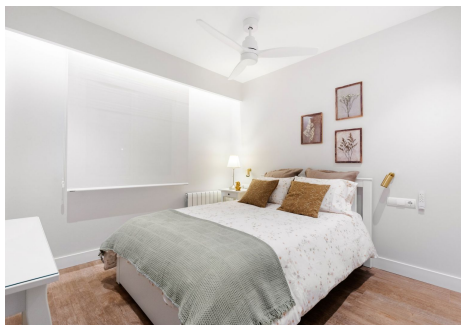
# IDILIQ

## ESTATES

privacy and convenience. The property includes a storage room located within the residence.  
Real estate brokerage fees are included in the price.

An exceptional opportunity to enjoy a luxury home by the sea, in one of the most exclusive and sought-after areas of Málaga.

We speak Spanish, English, Swedish, Dutch, French, German, and Italian.





# IDILIQ

ESTATES

