



R5382316

📍 Marbella

REF# R5382316 1.200.000 €

BEDS

4

BATHS

4

BUILT

270 m²

PLOT

1050 m²

House with great potential in El Rosario , one of the most established and sought-after residential developments in Marbella East, just minutes from the best beaches, beach clubs and beach bars in the area. Located on a large, private plot, this property represents an excellent opportunity for both investors and those looking to renovate a home and turn it into a personalized villa in a prime location. The house is distributed over three floors plus a basement and features a private swimming pool and a beautiful mature garden. Thanks to its orientation and layout, it enjoys plenty of natural light and pleasant views. The main floor features a spacious living-dining room with direct access to a terrace overlooking the sea, a fully equipped kitchen, two bedrooms with built-in wardrobes, and two en-suite bathrooms. The upper floor offers a similar layout, with an open-plan kitchen and access to another covered terrace overlooking the garden. The outdoor area offers great potential for enjoying the Mediterranean lifestyle, with a private pool, extensive green spaces, and ideal areas for creating different outdoor settings. Furthermore, the property has ample space to extend the house or add new features such as a garage, gym, or guest quarters. Located in a gated community with 24-hour security, surrounded by nature and detached villas, El Rosario stands out for its tranquility and excellent connection to Marbella town center, golf courses, international schools, and all kinds of amenities. Las Chapas beach and several of Marbella's best beach bars are just

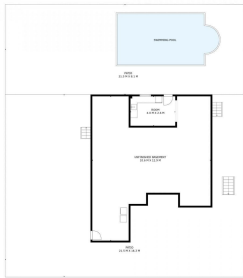
+34 951 123 083 | +44 (0)330 179 8687 | info@idiliqestates.com Local 28, Edificio D, Centro de Negocios Puerta

de Banús, N-340, Km 175, 29660 Nueva Andlucia

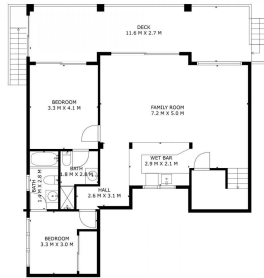
IDILIQ

ESTATES

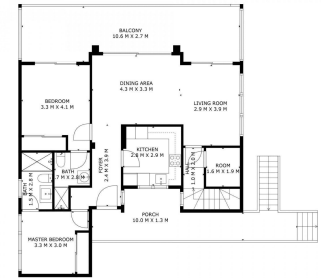
minutes away.



SIZES ARE APPROXIMATE, ACTUAL MAY VARY.



SIZES ARE APPROXIMATE, ACTUAL MAY VARY.



SIZES ARE APPROXIMATE, ACTUAL MAY VARY.