

IDILIQ

ESTATES



R4315462

 The Golden Mile

REF# R4315462 35.000.000 €

BEDS

16

BATHS

16

BUILT

2001 m²

PLOT

8799 m²

TERRACE

742 m²

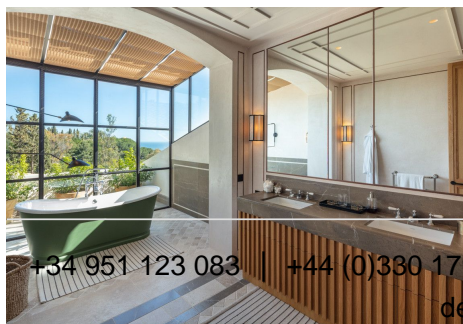
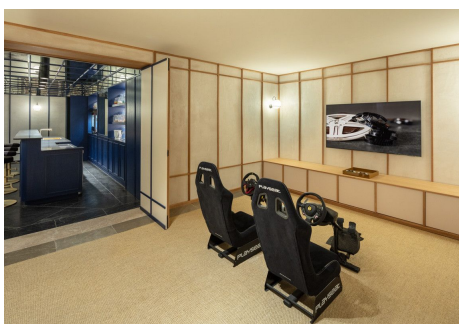
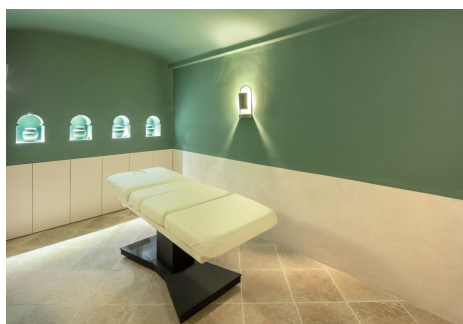
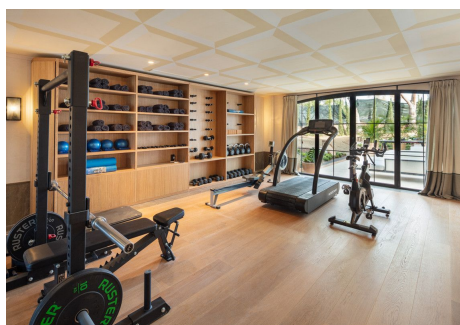
The most exquisitely conceived estate with breath-taking panoramic views towards the Mediterranean Sea and the spectacular backdrop of the Sierra Blanca mountain. This authentic Spanish estate is located in one of the most sought after areas in the Golden Mile. Designed by respected Spanish interior designer Luisa Olazábal, the property promotes an eclectic and timeless style. This truly impressive villa opens up to a stunning grand salon with multiple lounge spaces built within a sunken area and a separate dining area with opposing dual open steel fireplaces with wooden clades. A surprise element hides just behind the velvety curtains, where you can find a fully customised cocktail bar with incorporated Bose speakers, personalised lighting elements, multiple chill-out areas, art-deco flooring and even a smoke machine. The wide-ranging indoors lead seamlessly to the magnificent backyard, connected by five large steel case French doors. The exquisite kitchen features a separate butler's pantry and chef's island, a stunning vintage Lacanche gas stove, built-in wooden cabinets for storage, wine cooler and walk-in fridge. The bright dining area overlooks the panoramic garden and sea views and is comfortably connected to the covered outdoor patio. This impressive estate couldn't be complete without its offering of multiple welcoming outdoor areas. True to its Spanish heritage, you can bask in its Andalusian architecture with spacious covered and uncovered patios, wooden beam ceiling details, a centre water feature, lush vegetation and romantic manicured gardens, and

+34 951 123 083 | +44 (0)330 179 8687 | info@idiliqestates.com Local 28, Edificio D, Centro de Negocios Puerta de Banús, N-340, Km 175, 29660 Nueva Andlucia

IDILIQ

ESTATES

more...



+34 951 123 083 | +44 (0)330 179 8687 | info@idiligestates.com Local 28, Edificio D, Centro de Negocios Puerta de Banús, N-340, Km 175, 29660 Nueva Andalucía

IDILIQ

ESTATES

