



R5166772

 Guadalmina Baja

REF# R5166772 3.250.000 €

BEDS

6

BATHS

6.5

BUILT

564 m<sup>2</sup>

PLOT

1880 m<sup>2</sup>

TERRACE

200 m<sup>2</sup>

A family villa situated in the highly sought-after residential area of Guadalmina Baja, in San Pedro de Alc ntara.

The 564 m<sup>2</sup> property boasts six spacious bedrooms and six bathrooms, on a generous plot of 1,880 m<sup>2</sup>; perfect for a large family wishing to settle in Marbella. The fully fitted kitchen is complemented by a separate laundry room and a dedicated storage area, while the living room offers several seating areas around a welcoming fireplace, all oriented towards the covered terraces and lush gardens. A private swimming pool and a barbecue area further enhance the outdoor lifestyle, while the well-maintained garden provides a tranquil retreat. The villa is presented in good condition and includes a variety of functional spaces. Fitted wardrobes are found in the bedrooms, while a games room and an office add to the versatility of the home. Balconies extend from several rooms, offering further opportunities to relax and enjoy the unobstructed views of La Concha mountain.

Conveniently located close to shops and the town centre, this villa combines privacy with accessibility. Its proximity to local amenities, combined with its extensive spaces and practicality, makes it an outstanding

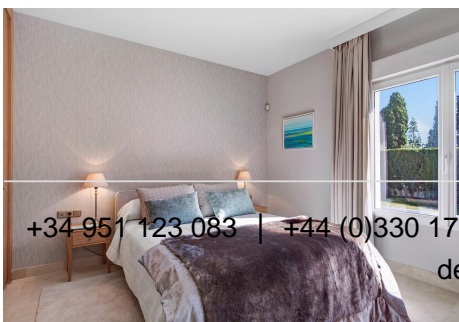
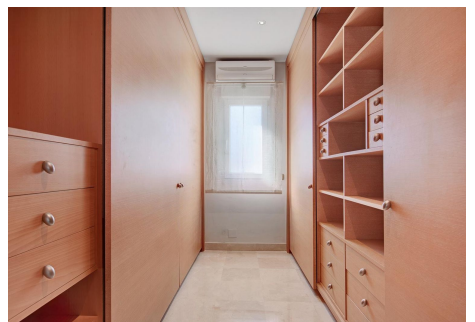
+34 951 123 083 | +44 (0)330 179 8687 | [info@idiliqestates.com](mailto:info@idiliqestates.com) Local 28, Edificio D, Centro de Negocios Puerta de Ban s, N-340, Km 175, 29660 Nueva Andl ucia



# IDILIQ

## ESTATES

choice for families seeking a comfortable and safe lifestyle in one of Marbella's most prestigious residential areas.



+34 951 123 083 | +34 (0)330 179 8687 | [info@idiliqestates.com](mailto:info@idiliqestates.com) Local 28, Edificio D, Centro de Negocios Puerta de Banús, N.º 340, Km 175, 29660 Nueva Andalucía



# IDILIQ

ESTATES

