



R5420161

📍 Manilva

REF# R5420161 279.000 €

BEDS

2

BATHS

2.5

BUILT

90 m<sup>2</sup>

TERRACE

15 m<sup>2</sup>

Middle Floor Apartment with Panoramic Sea Views in Altos de Princesa Kristina

Set within the peaceful residential community of Altos de Princesa Kristina, this well-positioned middle floor apartment offers panoramic views, excellent communal facilities, and a location within walking distance of the beach. Combining comfort, convenience, and a relaxed Mediterranean lifestyle, it is an ideal home for both permanent living and holidays on the Costa del Sol.

The apartment features two spacious bedrooms, each with its own en-suite bathroom, providing privacy and comfort for both residents and guests. The bright living and dining area flows naturally onto a private terrace, where uninterrupted sea views create the perfect setting for morning coffee, outdoor dining, or simply enjoying the changing colours of the Mediterranean throughout the day.

Residents benefit from a well-maintained communal swimming pool, as well as both padel and tennis court, offering excellent opportunities to stay active without leaving the community. The building is equipped with a lift, ensuring easy access to the apartment, while a private covered parking space at street level adds

+34 951 123 083 | +44 (0)330 179 8687 | [info@idiliqestates.com](mailto:info@idiliqestates.com) Local 28, Edificio D, Centro de Negocios Puerta de Banús, N-340, Km 175, 29660 Nueva Andlucia

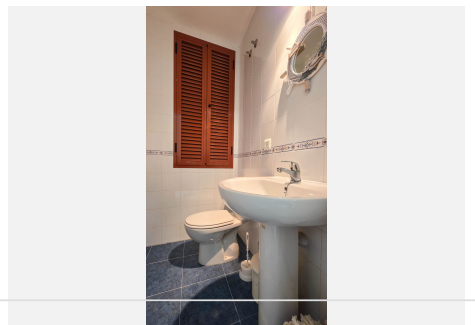
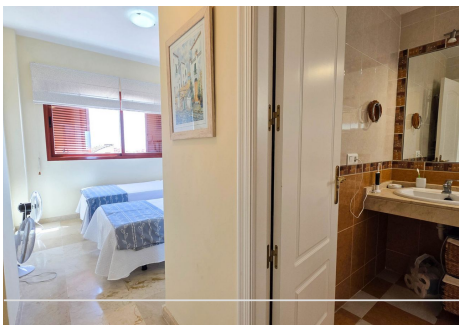
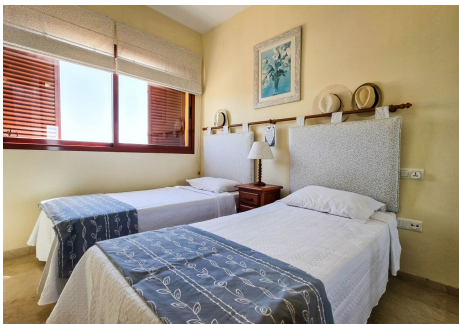
# IDILIQ

ESTATES

everyday convenience.

Located just a short walk from the beach and within easy reach of nearby restaurants and local amenities, this apartment offers the perfect balance between tranquillity and accessibility in one of Manilva's most attractive residential areas.

Málaga Airport is approximately 1 hour away by car, while Gibraltar Airport can be reached in around 30 minutes.



# IDILIQ

ESTATES

