



MIDDLE FLOOR APARTMENT 2 BEDROOMS 2 BATHROOMS IN TORREMUELLE

 Torremuelle

REF# R5417224 320.000 €

BEDS

2

BATHS

2

BUILT

95 m²

TERRACE

10 m²

Discover your new home in Torremuelle! This charming two-bedroom flat, located just 50 metres from the sea, is the perfect retreat to enjoy the Costa de Benalmádena. With a magnificent residential complex featuring a communal swimming pool and gardens, you can relax and enjoy the sun in an idyllic setting.

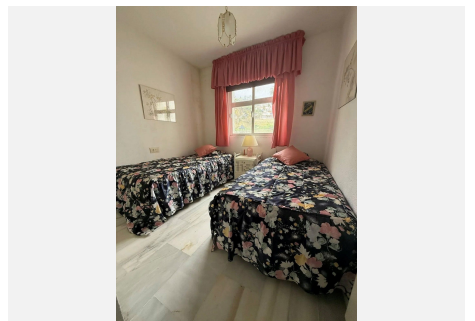
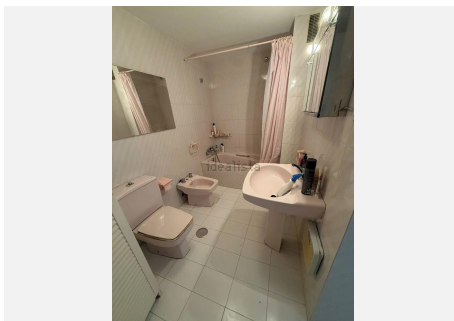
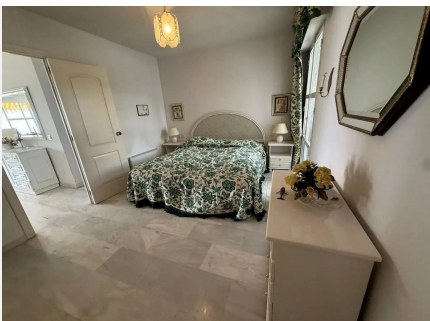
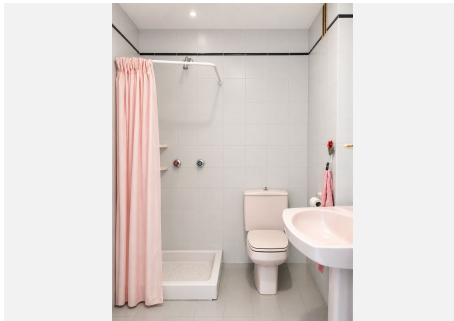
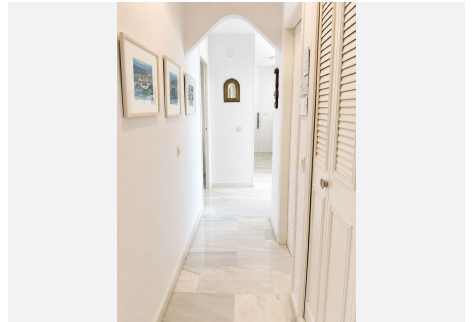
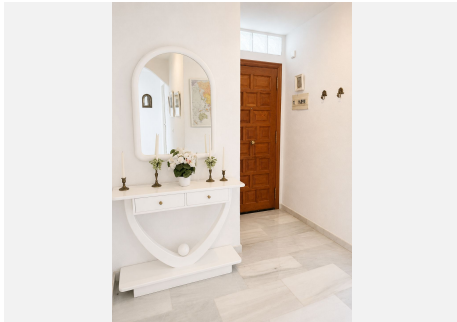
The flat, offers two spacious bedrooms with fitted wardrobes and two bathrooms, ideal for the comfort of the whole family. The kitchen, with a breakfast bar, opens onto the bright living room, creating a cosy and functional space. In addition, the large and sunny terrace is perfect for enjoying pleasant evenings outdoors.

Located in a quiet residential area, you will have supermarkets, schools and restaurants within easy reach, as well as easy access to the local train station. Don't worry about parking, as a garage space is included in the price. This flat is in need of some minor renovations but it is a unique opportunity that you won't want to miss. Come and see it and start enjoying life by the sea!

IDILIQ

ESTATES

Please note: Some images have been enhanced with AI to improve presentation, styling, and brightness. The property should be viewed in person to assess its actual condition and features. We have a full walk through video to provide if you are interested.



IDILIQ

ESTATES

