




## MIDDLE FLOOR APARTMENT 2 BEDROOMS 2 BATHROOMS IN MIJAS COSTA

 Mijas Costa

REF# R5394508 370.000 €

BEDS

2

BATHS

2

BUILT

114 m<sup>2</sup>

TERRACE

25 m<sup>2</sup>

Discover relaxed Mediterranean living in this bright and spacious apartment located in the sought-after Miraflores Golf area of Mijas Costa. Perfectly positioned next to the prestigious Miraflores Golf Club, this elegant home offers beautiful open golf and greenery views, generous indoor and outdoor spaces, and a peaceful yet convenient lifestyle on the Costa del Sol.

The apartment features 2 spacious bedrooms and 2 bathrooms across 114 m<sup>2</sup> of interior living space, complemented by a sunny 25 m<sup>2</sup> terrace ideal for outdoor dining, entertaining, or simply enjoying the tranquil surroundings and year-round sunshine. The bright open-plan living and dining area flows seamlessly onto the terrace through large glass doors, creating an airy and welcoming atmosphere filled with natural light.

The fully equipped kitchen offers practicality and comfort, while both bedrooms provide ample storage and a calm, relaxing feel. The master suite enjoys direct access to the terrace, allowing you to wake up to peaceful

# IDILIQ

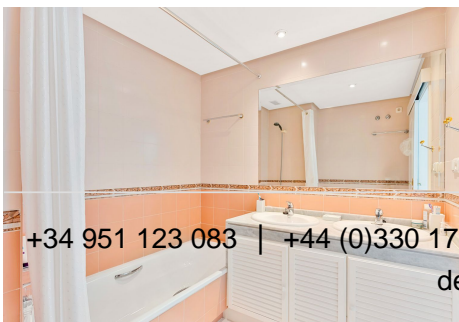
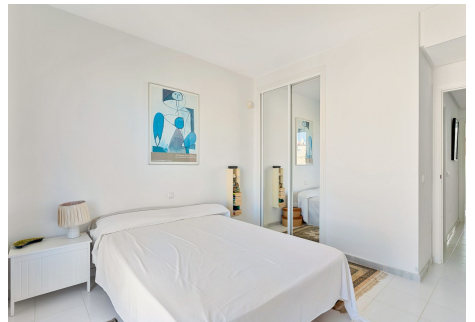
ESTATES

garden views every morning.

Set within a well-maintained gated community, residents benefit from beautifully landscaped gardens and a large communal swimming pool area surrounded by mature palm trees. The property also includes private parking and storage.

Located just a short drive from the beach, restaurants, shops, and all amenities, this apartment combines the serenity of golf-front living with excellent accessibility to Marbella, Fuengirola, and Málaga Airport.

An ideal property for permanent living, a holiday home, or a smart investment opportunity in one of Mijas Costa's most desirable residential areas.



+34 951 123 083 | +44 (0)330 179 8687 | [info@idiliqestates.com](mailto:info@idiliqestates.com) | Local 28, Edificio D, Centro de Negocios Puerta de Banús, N-340, Km 175, 29660 Nueva Andalucía

# IDILIQ

ESTATES

