



PENTHOUSE DUPLEX 3 BEDROOMS 2.5 BATHROOMS IN ESTEPONA

 Estepona

REF# R5362150 465.000 €

BEDS

3

BATHS

2.5

BUILT

140 m²

TERRACE

60 m²

Duplex Penthouse with Panoramic Sea Views and Private Solarium in Costa Galera

Located in the popular Costa Galera development, this duplex penthouse combines generous living space with panoramic sea views and excellent outdoor areas, all within walking distance of the beach. Set in a well-maintained community with six communal swimming pools and an on-site restaurant, the property offers a relaxed Mediterranean lifestyle in a convenient coastal setting.

The penthouse features three bedrooms, a separate office, two bathrooms, and a guest WC, arranged over two levels to create a practical and comfortable layout. The bright living area opens onto a terrace with open sea views, while the upper level leads to a private solarium designed for making the most of the sunshine and surroundings.

IDILIQ

ESTATES

A particular highlight of the property is the spacious rooftop solarium, complete with its own WC, jacuzzi, shower, and kitchen sink with both hot and cold water. There is also space for a wine fridge, along with facilities for a TV/shower/changing room with a toilet and hand wash basin. The solarium also includes a practical kitchenette with a wall unit, worktop, microwave, and space for an internal fridge, making it ideal for outdoor dining, entertaining guests, or simply enjoying the panoramic views across the Mediterranean coastline.

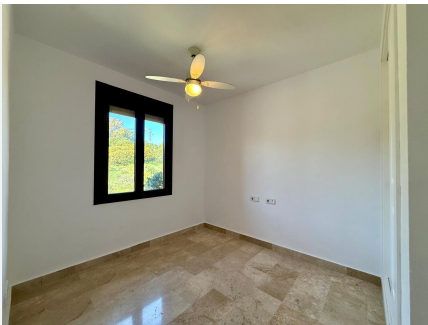
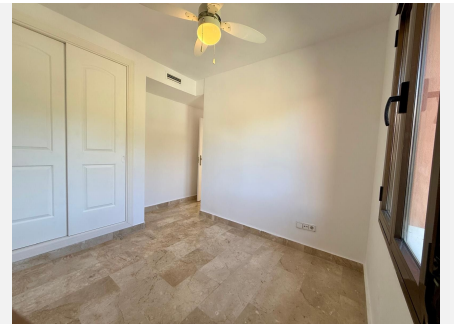
Costa Galera is known for its peaceful atmosphere and attractive communal areas, while still being close to the beach, local restaurants, and amenities. Whether used as a permanent residence or a holiday home, this duplex penthouse offers the ideal balance of comfort, views, and location.

Málaga Airport is approximately one hour away by car, while Gibraltar Airport can be reached in around 35 minutes.



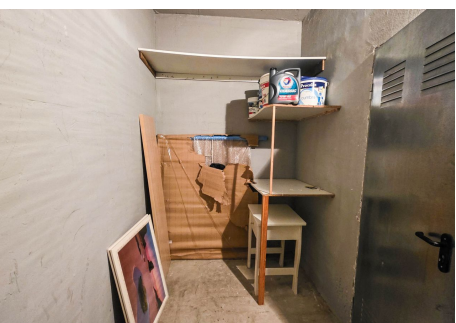
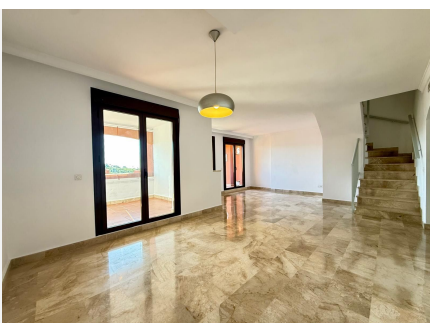
IDILIQ

ESTATES



IDILIQ

ESTATES



IDILIQ

ESTATES

