



R5354530

📍 Manilva

REF# R5354530 549.000 €

BEDS

3

BATHS

2.5

BUILT

127 m²

TERRACE

20 m²

Frontline Beach Townhouse with Private Garden and Panoramic Sea Views in Manilva Beach

Set in a true frontline beach position within the established Manilva Beach community, this refurbished south-facing townhouse offers direct access to the Mediterranean lifestyle, just a few steps from the sand. With panoramic sea views and a private garden, the property combines coastal living with comfort and privacy in a well-connected location.

The townhouse is arranged over two levels and features three bedrooms, two bathrooms, and a guest WC, providing a practical layout for both everyday living and hosting family or guests. The main living area opens onto a private garden, where the sea views create a natural extension of the home — ideal for outdoor dining, relaxing, or simply enjoying the surroundings.

Thanks to its south-facing orientation, the property benefits from natural light throughout the day, enhancing both the interior spaces and outdoor areas. The home has been refurbished, offering a fresh and updated feel while maintaining a functional design.

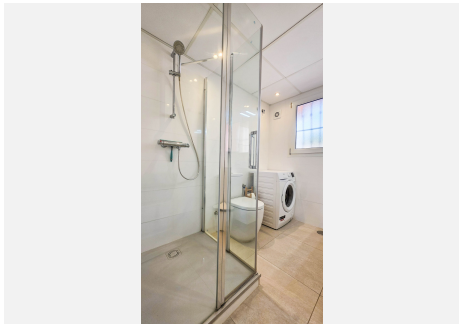
+34 951 123 083 | +44 (0)330 179 8687 | info@idiliqestates.com Local 28, Edificio D, Centro de Negocios Puerta de Banús, N-340, Km 175, 29660 Nueva Andlucia

IDILIQ

ESTATES

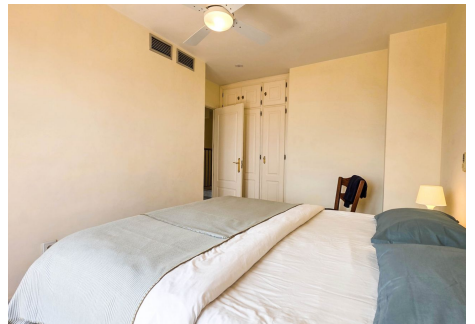
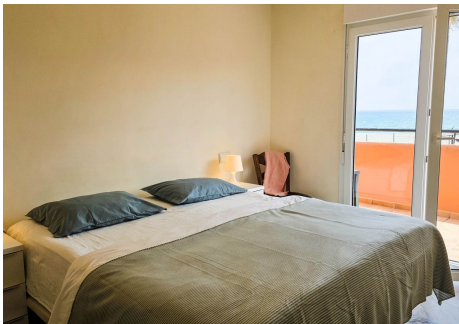
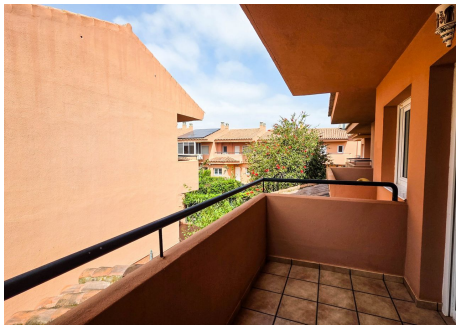
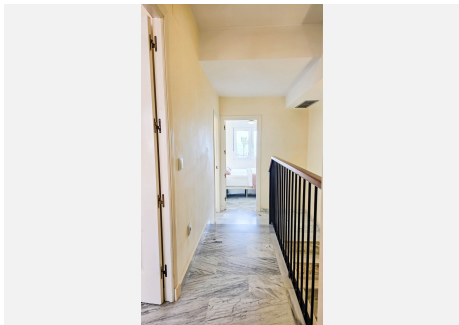
Residents of Manilva Beach enjoy access to communal swimming pools, landscaped gardens, a padel court, and a tennis court, creating a balanced lifestyle with both leisure and activity options. With the beach just steps away and local amenities within easy reach, the location is both convenient and peaceful.

Málaga Airport is approximately 1 hour away by car, while Gibraltar Airport can be reached in around 30 minutes.



IDILIQ

ESTATES



IDILIQ

ESTATES

