



R5319007

📍 La Duquesa

REF# R5319007 319.000 €

BEDS

2

BATHS

2.5

BUILT

94 m²

TERRACE

111 m²

Penthouse with Panoramic Sea Views in La Duquesa, Manilva

This impressive penthouse is perfectly located in La Duquesa, just a short walk from the beach and the vibrant marina with its selection of restaurants, cafés, and bars. Offering an exceptional 111 m² of terrace space, the property enjoys panoramic sea views that create a truly unique setting for both relaxation and entertaining.

Inside, the penthouse features two comfortable bedrooms, two bathrooms, and a guest WC. The open-plan living and dining area connects naturally to the expansive terrace, making the most of the property's elevated position and abundant natural light. With its generous outdoor space, this home is designed for enjoying the Mediterranean lifestyle all year round.

Residents benefit from a communal swimming pool and landscaped gardens, while a private garage space is also included. The development combines privacy with convenience, providing easy access to local amenities and excellent transport links along the Costa del Sol.

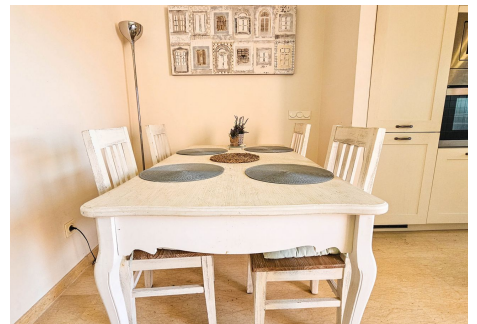
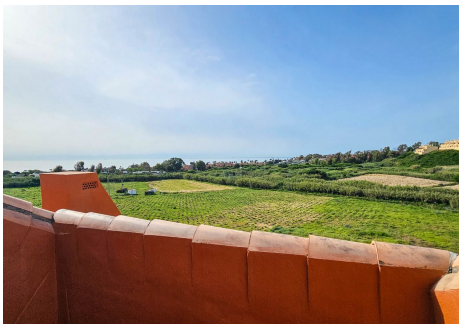
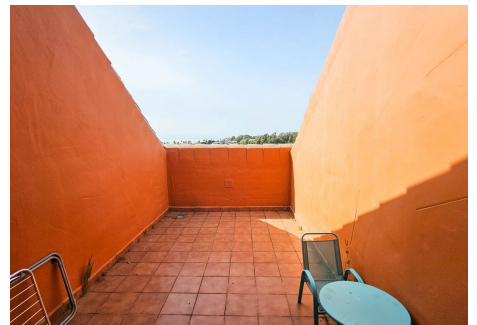
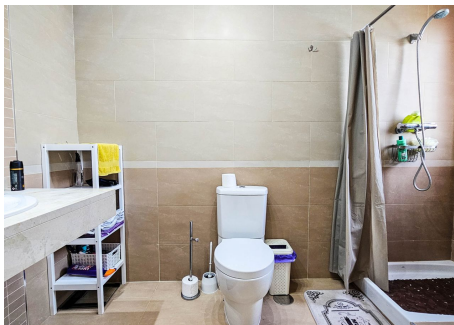
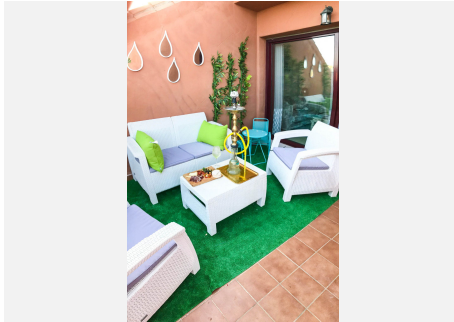
+34 951 123 083 | +44 (0)330 179 8687 | info@idiliqestates.com Local 28, Edificio D, Centro de Negocios Puerta de Banús, N-340, Km 175, 29660 Nueva Andlucia

IDILIQ

ESTATES

La Duquesa is well known for its charming marina, relaxed atmosphere, and proximity to renowned golf courses and beaches. For international connections, Málaga Airport is around 1 hour by car, while Gibraltar Airport is just 30 minutes away.

This penthouse represents a rare opportunity to own a spacious home with spectacular sea views and unbeatable access to the coast's best lifestyle offerings.



IDILIQ

ESTATES

