



R5165881

📍 Benahavís

REF# R5165881 925.000 €

BEDS

3

BATHS

4.5

BUILT

241 m²

TERRACE

84 m²

This beautiful property of 241 sqm in total, including 84 sqm of terraces, offers a unique combination of space, light, and breathtaking views. From here you can admire the sparkling Mediterranean Sea, the iconic La Concha mountain, and even Gibraltar.

The layout is thoughtfully designed with three very spacious bedrooms, all with en-suite bathrooms. On the entrance level there are two bedrooms, one with direct access to a generous terrace. On the upper floor you find the master bedroom with direct access to a large sun terrace – an ideal space for relaxation or entertaining, with plenty of room for a dining area, sun loungers, an outdoor kitchen, and a shower.

Parking is conveniently located right outside the residence. The property belongs to a well-maintained community with a panoramic pool and is set within a secure gated complex with documented rental potential.

An excellent choice as a year-round home, a holiday retreat, or a sound investment with strong rental income possibilities. Golf courses, restaurants, shops, international schools, and Marbella's sandy beaches

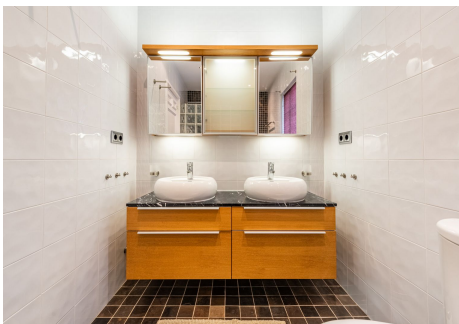
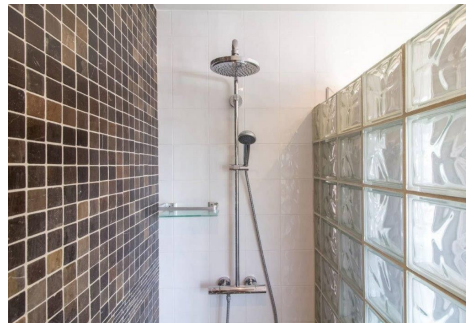
+34 951 123 083 | +44 (0)330 179 8687 | info@idiliqestates.com Local 28, Edificio D, Centro de Negocios Puerta de Banús, N-340, Km 175, 29660 Nueva Andlucia

IDILIQ

ESTATES

are all just 5-10 minutes away by car.

Contact us today to arrange your private viewing.



ESTATES

