

# IDILIQ

## ESTATES



R5072506

📍 Estepona

REF# R5072506 995.000 €

BEDS

3

BATHS

2.5

BUILT

118 m²

PLOT

58 m²

TERRACE

41 m²

This residence is part of an exclusive beachfront complex that offers an extensive range of sports facilities, including a gym, paddle tennis, indoor and outdoor swimming pools and a spa. You can enjoy an active lifestyle and at the same time create peace and quiet in peaceful surroundings. The apartment is tastefully furnished with care and attention to every detail. It offers an open floor plan with generous living areas, including a spacious living room with direct access to an expansive terrace that opens to the sea view and the morning sun. The kitchen, equipped by Gunni & Trentino with modern Gaggenau appliances, is a cooking enthusiast's dream.

The home has three spacious bedrooms, all with generous wardrobes. The master bedroom has an en suite bathroom with shower and a walk-in closet. The two other bedrooms share an elegant bathroom with a bathtub. All bedrooms have access to the private garden which offers west exposure with afternoon and evening sun. There are AC as well as underfloor heating in the whole apartment. The property includes 2 garage spaces and a large storage room. What really distinguishes this apartment is its harmonious integration with the surrounding nature and its unique design. The architect Rafael de La-Hoz has created an atmosphere where no visual obstacles interfere with the fantastic sea view. The light flows freely through the panoramic windows and provides uninterrupted contact with the scenic surroundings.

+34 951 123 083 | +34 (0)330 179 8687 | [info@idiliqestates.com](mailto:info@idiliqestates.com) Local 28, Edificio D, Centro de Negocios Puerta de Banús, N-340, Km 175, 29660 Nueva Andalucía



# IDILIQ

## ESTATES

The location is perfect, on the beach and close to golf courses, shopping areas, restaurants and the new hospital. Here you have everything within easy reach, making this the ideal home for both relaxation and as a base for your adventures.

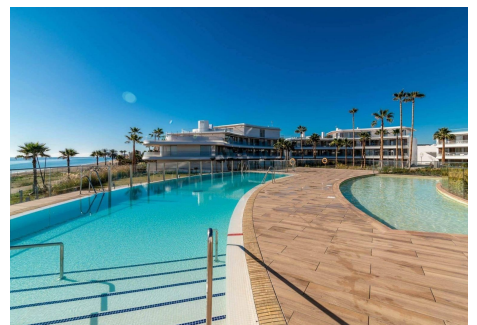
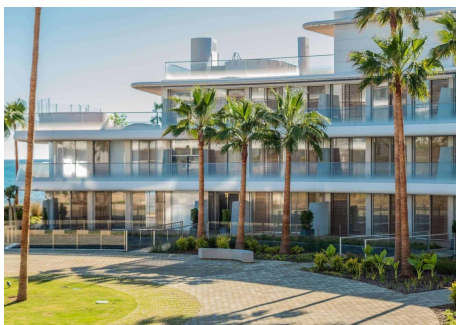
The urbanisation has direct access to the beach and blends naturally into the Mediterranean coastal environment, and with 24-hour security, the area is both safe and provides peace of mind. Welcome to your dream by the sea.





# IDILIQ

ESTATES





# IDILIQ

ESTATES

