



R5081197

📍 Benahavís

REF# R5081197 1.450.000 €

BEDS

3

BATHS

3

BUILT

214 m²

TERRACE

236 m²

Exceptional Ground Floor Apartment with Sea Views in Real de La Quinta

Introducing a stunning 3-bedroom ground floor apartment located in the exclusive Real de La Quinta community in Benahavís. This beautiful residence offers a perfect fusion of contemporary design and natural surroundings, enhanced by breathtaking sea views and a spacious, light-filled layout.

The apartment comprises three generously sized bedrooms and two sleek, modern bathrooms, making it ideal for families or guests. With a south-west orientation, the property enjoys abundant sunlight throughout the day and captivating sunset views in the evening.

Inside, the open-concept living and dining area flows effortlessly into a spacious terrace, ideal for outdoor dining and enjoying the picturesque setting. The stylish kitchen is fully equipped with high-end appliances and a convenient breakfast bar, creating a social and functional space.

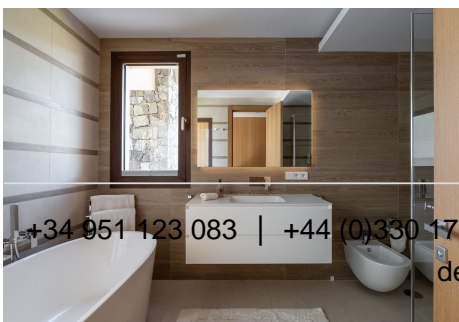
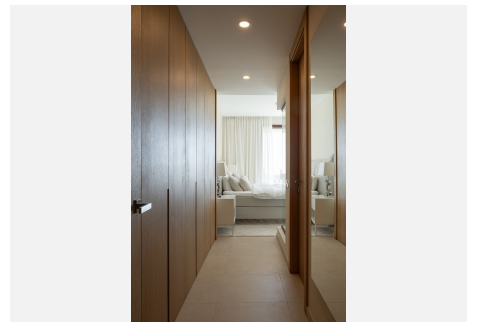
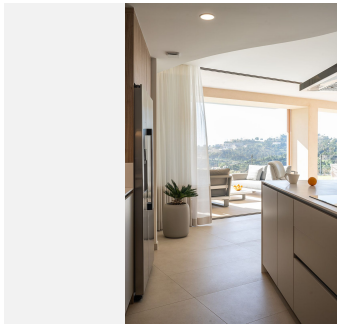
# IDILIQ

## ESTATES

Additional features include two private parking spaces within the development and easy ground-level access to landscaped gardens and outdoor areas.

Residents of this secure, gated complex benefit from 24-hour security, lush subtropical gardens, and several swimming pools designed for both adults and children. The larger development offers exceptional amenities such as a boutique hotel, gourmet restaurants, wellness center with spa, golf course, boutique shopping, and even an equestrian center—offering a resort-style experience in the heart of nature.

Situated just 10 minutes from Puerto Banús and close to local shops, top international schools, and upcoming infrastructure improvements, this apartment is a unique opportunity to enjoy elegant living with superb convenience and long-term value.



+34 951 123 083 | +44 (0)330 179 8687 | [info@idiliqestates.com](mailto:info@idiliqestates.com) Local 28: Edificio D, Centro de Negocios Puerta de Banús, N-340, Km 175, 29660 Nueva Andalucía

# IDILIQ

ESTATES

