



R4619104

 The Golden Mile

REF# R4619104 2.600.000 €

BEDS

5

BATHS

5.5

BUILT

654 m²

PLOT

624 m²

TERRACE

79 m²

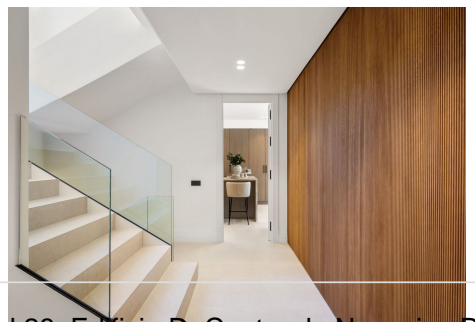
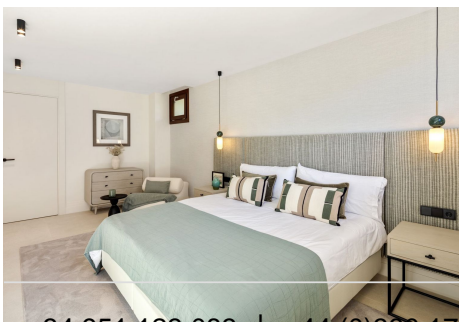
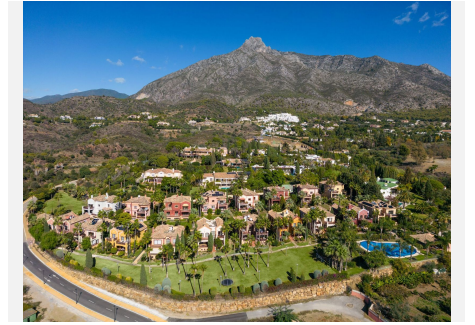
La Capellanía 1 is a charming Mediterranean townhouse that sports a prime location within the La Capellanía urbanisation situated on the Marbella Golden Mile. This townhouse is reminiscent of traditional Mediterranean villas, with white walls and traditional roof tiles. Capellanía 1 also benefits from a generous amount of terraces, allowing residents to enjoy the outdoor spaces. The terraces accommodate chill-out areas and al-fresco dining, as well as direct access to the ground floor levels. This townhouse benefits from access to a stunning communal garden, which is meticulously maintained and allows for a sense of community. There is also a large communal pool to be enjoyed all year round. The interiors of La Capellanía 1 have been completely refurbished, sporting contemporary furnishings and fixtures. The interiors exude modern sophistication and comfort, with an elegant colour scheme and hints of elegant marble and wooden notes scattered across the interiors. The living area boasts an open plan layout, connecting the intimate dining area to the formal and informal living areas. Direct terrace access from this area allows for a seamless flow between the indoors and outdoors. The kitchen is connected to the dining area, but remains separate from the dining thanks to the elegant glass doors. The kitchen is ultra-modern, sporting a marvellous marble kitchen island and elegant wooden cupboards. Plenty of storage and counter space add a level of functionality to the kitchen. The kitchen also comes fully equipped with state-of-the-art kitchen

+34 951 123 083 | +44 (0)330 179 8687 | info@idiliqestates.com Local 28, Edificio D, Centro de Negocios Puerta de Banús, N-340, Km 175, 29660 Nueva Andlucia

IDILIQ

ESTATES

appliances. Spread over three levels, the upper level of the property is dedicated to the well appointed bedrooms, each designed elegantly and boasting its own relaxing atmosphere. The master bedroom steals the show, with stunning interior design choices that are functional and comfortable. The bedroom has its own private terrace that looks out onto the surrounding area. The master bedroom's ensuite bathrooms sports a shower, stand-alone bath tub and a stunning double vanity with marble and wooden fixtures, as well as flattering LED lighting. The basement level is reserved for a stunning entertainment room that hosts a TV area and bar. Connected is the home gym. An ample storage and laundry room also add a level of functionality. La Capellanía also benefits from a modern private garage that can accommodate up to 3 cars.



IDILIQ

ESTATES

