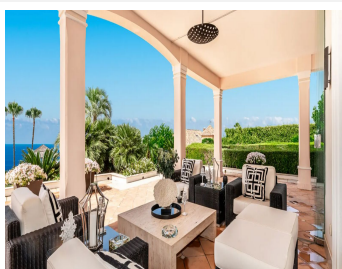
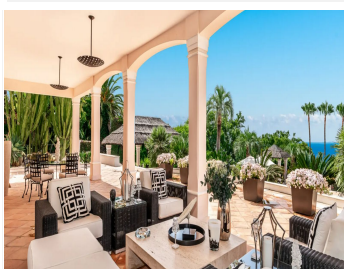


IDILIQ

ESTATES



R4405078

📍 Sierra Blanca

REF# R4405078 17.900.000 €

BEDS

5

BATHS

6

BUILT

1558 m²

PLOT

4373 m²

TERRACE

210 m²

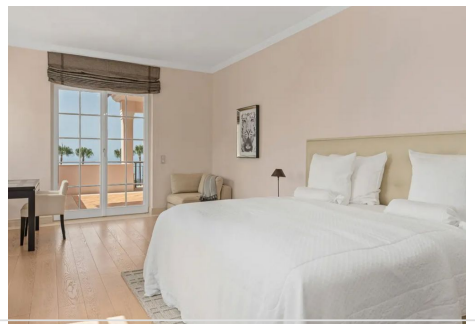
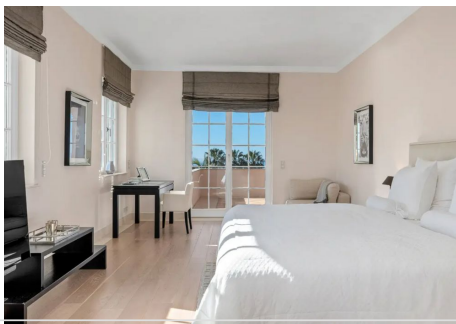
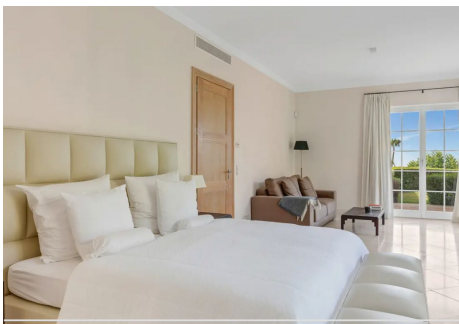
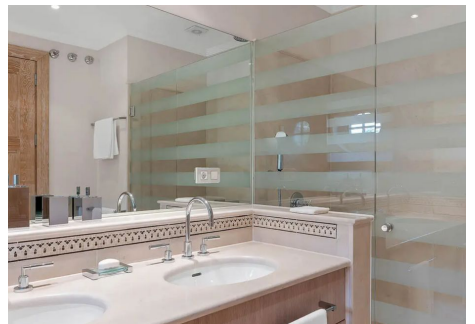
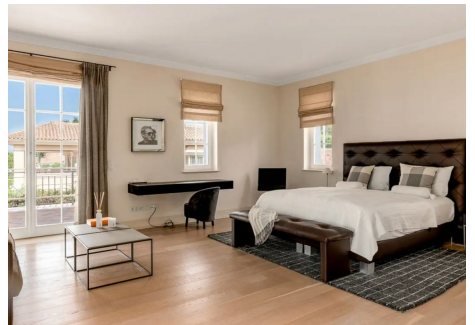
Situated atop one of Sierra Blanca's elevated streets in Marbella, this property showcases a striking contemporary design, sprawled across a sprawling double plot spanning 4,300 square meters. Access to this pristine estate is granted via a meticulously maintained botanical garden, leading to an expansive entrance hall graced by lofty double-height ceilings and a dual staircase. The villa's layout encompasses a generously proportioned kitchen featuring top-of-the-line Gaggenau appliances, a laundry room equipped with Miele washer and dryer, and a separate staff quarter. Adjacent to the kitchen, a spacious dining area with a table accommodating 10 guests seamlessly flows into the salon area, which offers access to a capacious terrace affording breathtaking sea views. On the ground floor, a cozy lounge area boasting a fireplace conceals a discreet entrance to the guest apartment suite, which also enjoys its private access. The first floor boasts three luxurious bedroom suites, including the master bedroom, along with an office boasting stunning sea vistas. The lower level houses an expansive spa area featuring a Finnish sauna, a substantial restroom, double showers, and toilet facilities, complemented by an impressive wine cellar and multiple storage spaces. Completing this lower level is a substantial garage capable of accommodating up to five cars and two technical rooms dedicated to housing the house and pool machinery. The residence is characterized by its premium finishes, including marble and wooden flooring, underfloor heating, hot/cold air

+34 951 123 083 | +44 (0)330 179 8687 | info@idiliqestates.com Local 28, Edificio D, Centro de Negocios Puerta de Banús, N-340, Km 175, 29660 Nueva Andalucía

IDILIQ

ESTATES

conditioning, and a generously sized outdoor pool measuring 12x8 meters, which can be heated. The meticulously landscaped tropical gardens add to the overall allure. Furthermore, there exists a planned renovation project to expand and enhance the villa, resulting in a total area of 2,000 square meters. This ambitious project encompasses the addition of a sixth bedroom suite, an expansive infinity pool measuring 6x15 meters, the installation of a new high-quality kitchen, an enlargement of the spa area with a plunge pool and sauna, and the creation of a six-car garage. It's important to note that the cost of this renovation is not included in the current sale price.



IDILIQ

ESTATES

