



R4441438

 Bel Air

REF# R4441438 2.400.000 €

BEDS

4

BATHS

4.5

BUILT

377 m<sup>2</sup>

PLOT

1376 m<sup>2</sup>

TERRACE

188 m<sup>2</sup>

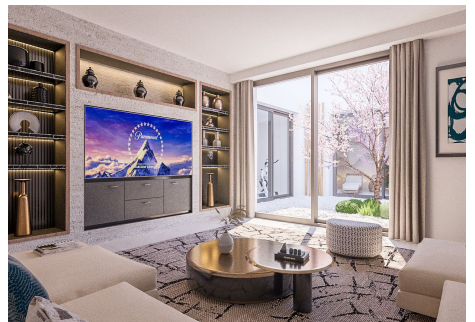
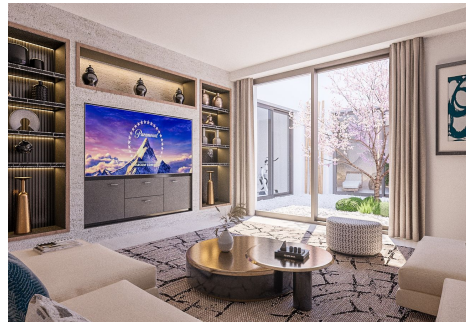
**MODERN ANDALUSIAN STYLE PROJECT** Welcome to the exquisite Modern Andalusian Style Project in the thriving community of Belair, nestled within the coveted New Golden Mile. This charming villa encapsulates the essence of indoor-outdoor living, surrounded by lush greenery, providing families with spacious, luminous interiors and a plethora of entertainment options. With multiple outdoor lounging areas, it's a haven for embracing Marbella's coveted Mediterranean lifestyle. **BRIGHT INTERIORS** Step inside this remarkable residence and you'll be greeted by a welcoming hall, leading to a bright, open lounge dining area seamlessly integrated with a fully equipped kitchen. This level also hosts two guest bedrooms with en-suite facilities, along with the luxurious master bedroom featuring a dressing area and a private bathroom. The outdoor spaces are an oasis for al fresco dining, lounging by the generous swimming pool, and reveling in the meticulously landscaped garden. The lower floor offers a versatile one-bedroom studio, a storage room, and a convenient cloakroom. Additionally, a spacious carport accommodates two vehicles. **THE AREA** Now, let's explore the surroundings. The New Golden Mile offers access to pristine beaches and a charming promenade, ideal for leisurely strolls. You'll also enjoy the convenience of nearby beach bars, shops, and children's playgrounds for quality time with loved ones. Within a short drive, a wealth of amenities awaits, from esteemed international schools and hospitals to world-class golf courses, beach

+34 951 123 083 | +44 (0)330 179 8687 | [info@idiliqestates.com](mailto:info@idiliqestates.com) Local 28, Edificio D, Centro de Negocios Puerta de Banús, N-340, Km 175, 29660 Nueva Andlucia

# IDILIQ

ESTATES

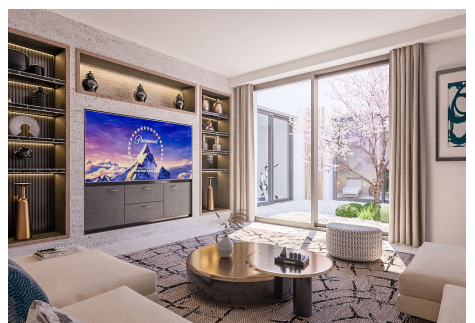
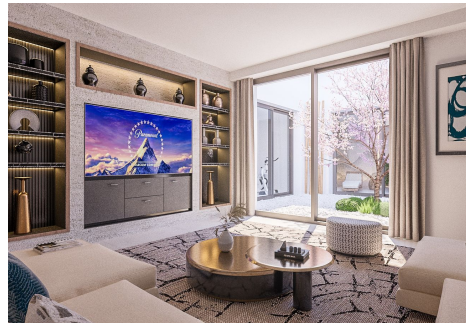
clubs, fine dining establishments, leisure centers, a safari park, and a local equestrian center. This diverse range of offerings ensures that your every need is met, simplifying day-to-day living.



+34 951 123 083 | +44 (0)330 179 8687 | [info@idiliquestates.com](mailto:info@idiliquestates.com) Local 28, Edificio D, Centro de Negocios Puerta de Banús, N-340, Km 175, 29660 Nueva Andalucía

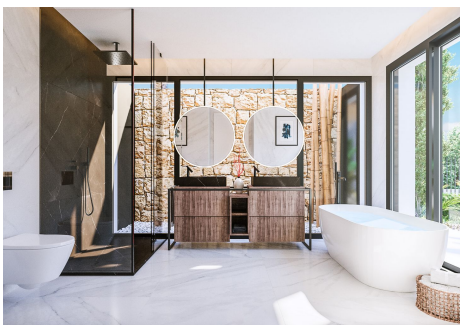
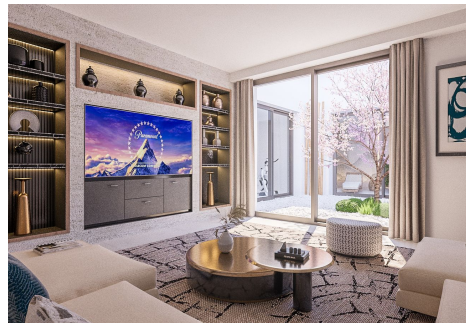
# IDILIQ

ESTATES



# IDILIQ

ESTATES



# IDILIQ

ESTATES

