

IDILIQ

ESTATES



R4216864

 Aloha

REF# R4216864 4.500.000 €

BEDS

5

BATHS

6

BUILT

640 m²

PLOT

1261 m²

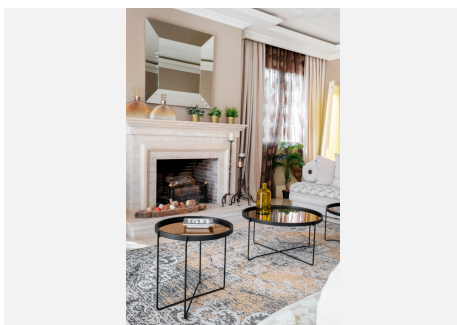
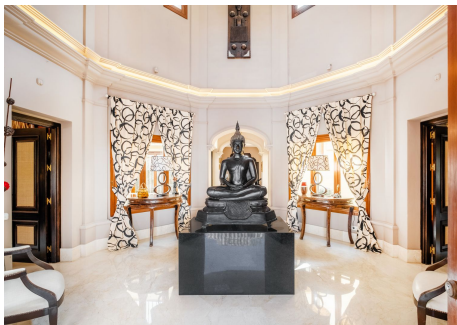
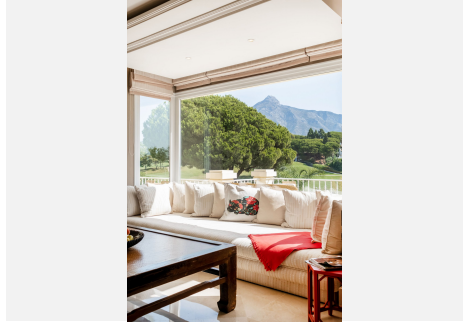
TERRACE

82 m²

Stunning frontline golf villa with panoramic mountain views to La Concha as well as overlooking the beautiful Aloha Golf course. The Villa is situated on a quiet cul-de-sac, just a short distance to the famous Puerto Banús marina and Aloha Gardens. The property is extremely convenient in terms of the floor plan distribution. All the main social areas such as kitchen, living room, dining room are well connected with direct accesses outside to the beautiful outdoor space that gives you a generous amount of natural sunshine throughout the home. All bedrooms are extremely good size with en suite bathrooms. All the bedrooms on the lower part of the house also have direct accesses to the gardens and pool area. The villa has to offer an amazing area for the cinema room, games room, gym and spa. This is an incredible opportunity to acquire an elegant high standard Andalusian villa in the most prime location of Nueva Andalucia with walking distance to all the amenities. This home is an ideal permanent or holiday home, don't miss this one of a kind opportunity.

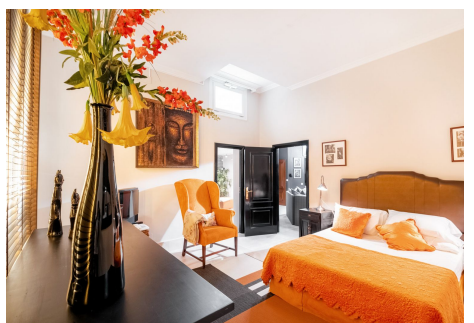
IDILIQ

ESTATES



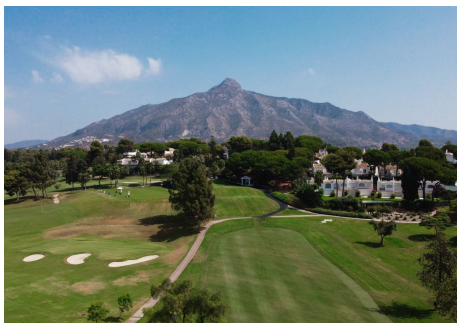
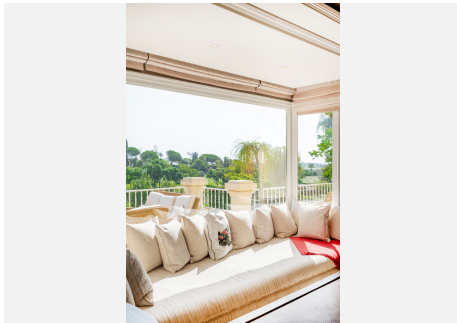
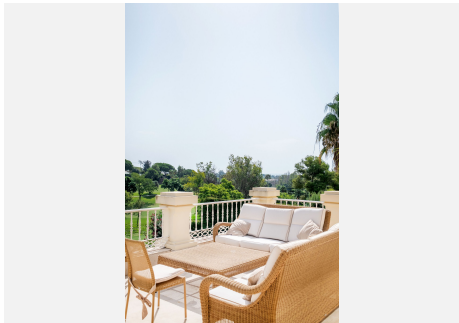
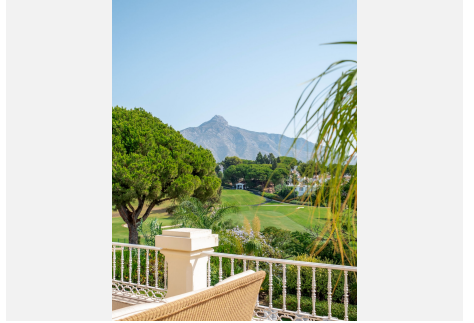
IDILIQ

ESTATES



IDILIQ

ESTATES



IDILIQ

ESTATES

