



R5127550

📍 Alhaurín de la Torre

REF# R5127550 780.000 €

BEDS	BATHS	BUILT	PLOT	TERRACE
5	2	300 m²	2554 m²	64 m²

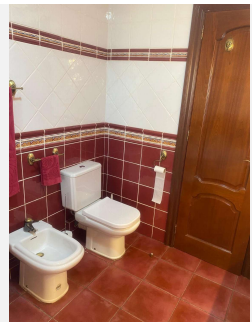
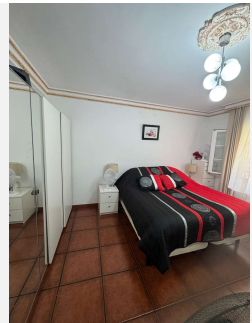
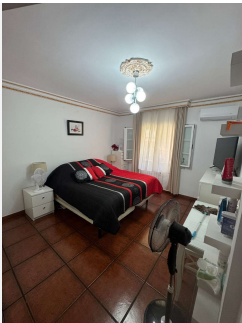
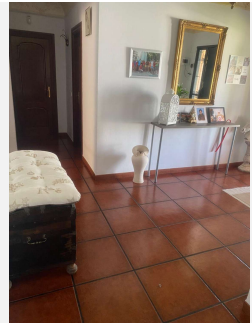
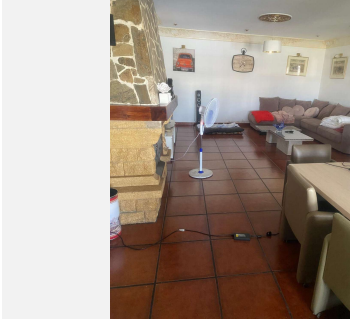
3547-V For sale spectacular villa of more than 300 meters on a plot of 2500 meters, consists on the ground floor of a living room with fireplace, an independent fitted kitchen with utility room, two double bedrooms, 1 bathroom, two huge `porches one front one rear, on the first floor we find another living room, an independent fitted kitchen, three bedrooms with fitted wardrobes, 1 bathroom, 1 terrace, on the plot we find a covered garage for two cars, two storage rooms, an incredible swimming pool, a very well-kept garden with a part lawn with automatic irrigation, the other part with fruit trees, several air conditioners, automatic gate, very well lit plot, all electricity and plumbing newly done , spectacular views of the valley, a paradise of tranquility.

It is located just 10 minutes from the International Airport of Malaga, 10 minutes from beaches, 20 minutes Malaga city, 10 minutes from the golf courses and just a few minutes from all amenities: supermarkets, restaurants, sports centers and schools.

The exact address has been omitted for security and data protection reasons. In compliance with the decree of the Junta de Andalucía 208/2005 of October 11, clients are informed that the notarial, registry, i. t. p, and other expenses inherent to the sale, are not included in the price.

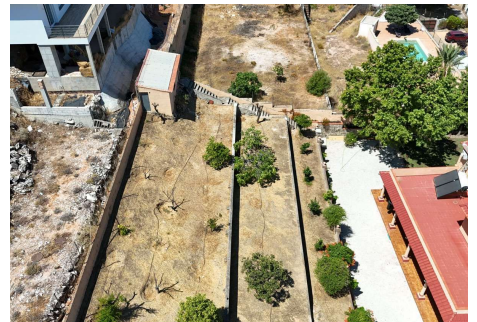
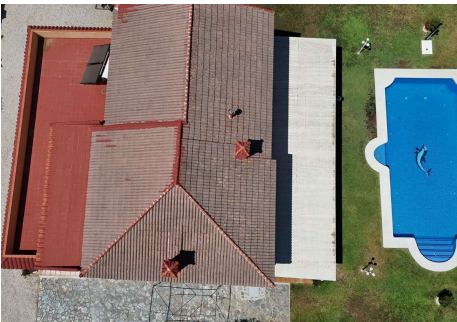
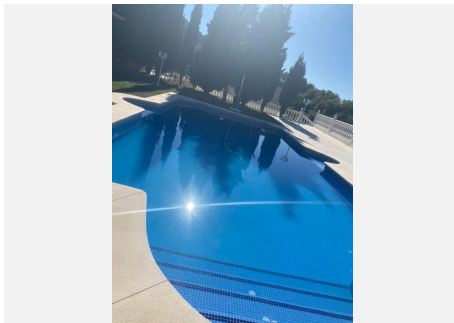
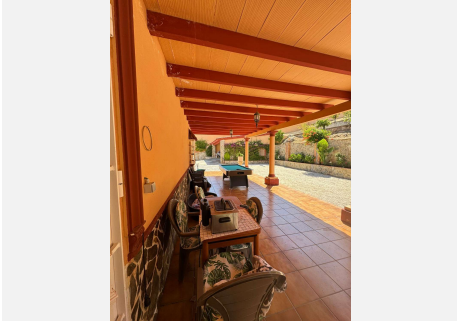
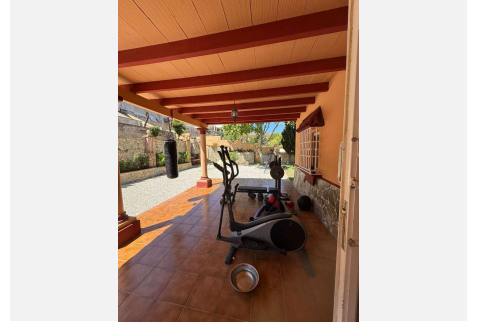
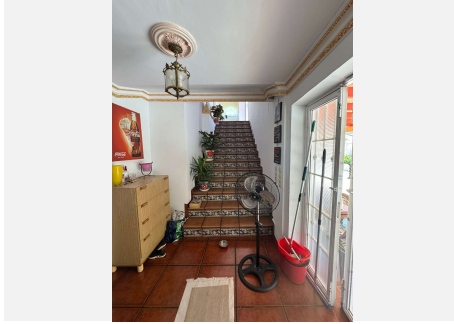
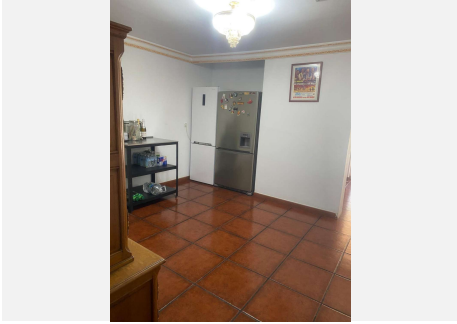
The data provided is for informational purposes only and has no contractual value. The offer is subject to
 +34 951 123 083 | +44 (0)330 179 8687 | info@idiliqestates.com Local 28, Edificio D, Centro de Negocios Puerta
 de Banús, N-340, Km 175, 29660 Nueva Andlaucia

errors, changes in price, availability and/or withdrawal from the market without prior notice.



IDILIQ

ESTATES



IDILIQ

ESTATES

