



R4572220

 Benahavís

REF# R4572220 256.000 €

BEDS

3

BATHS

2

BUILT

127 m²

TERRACE

93 m²

Gorgeous Duplex Apartment in Parque Botánico, Nestled Between San Pedro and Estepona This exquisite duplex apartment is located on the 5th floor of a building within a complex of buildings and villas. The complex is a gated community with lush landscaped areas and 24-hour security. Within the building, you'll find a range of exceptional communal facilities, including an outdoor pool with a bar, expansive gardens, a heated indoor pool, a well-equipped gym, a spa, and a jacuzzi. The apartment itself is spread across two levels. The lower floor features a spacious living and dining area with access to a large terrace offering panoramic views. You'll also find a fully furnished and equipped kitchen and two bedrooms with en-suite bathrooms. On the upper floor, there's another bedroom and a generous terrace with breathtaking panoramic views. Additionally, this property comes with the convenience of a garage and storage space in the building's basement. Don't miss the opportunity to make this stunning duplex apartment your new home."

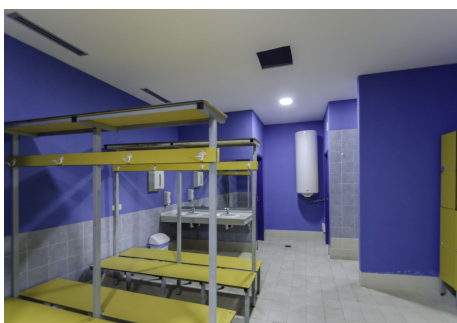
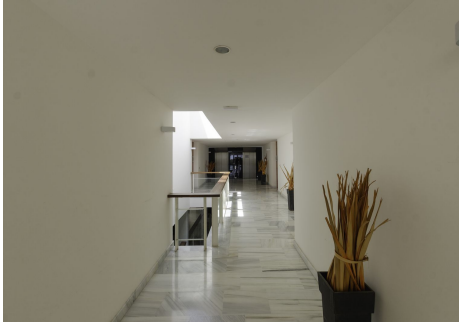
IDILIQ

ESTATES



IDILIQ

ESTATES



IDILIQ

ESTATES

