

R5337541

📍 Sotogrande

REF# R5337541 5.500.000 €

BEDS

5

BATHS

6

BUILT

1375 m²

PLOT

3383 m²

A timeless home designed with character, scale and a sense of calm that defines everyday living. Set in La Reserva de Sotogrande, and within easy walking distance of Sotogrande International School, this substantial villa combines classical architecture with generous proportions and open views towards the sea and Gibraltar.

The property is defined by its sense of arrival. A grand entrance hall features a striking double staircase and statement chandelier, creating a strong architectural focal point. The main living areas are well balanced and interconnected, designed for both daily living and entertaining, with direct access to the garden and outdoor spaces. In contrast to more contemporary designs, the villa embraces a classical architectural language, chosen for its proportion, character and enduring appeal.

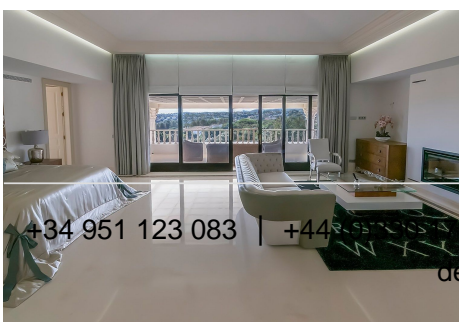
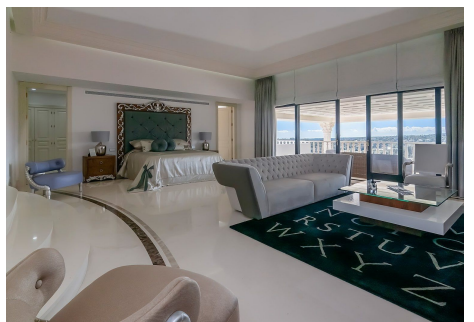
The villa offers five bedrooms and six bathrooms, with a total built area of 1,375m² and approximately 1,356m² of usable space. The lower level is dedicated to leisure and wellbeing, including a cinema room, billiards and bar area, wine room with pre-installed temperature control, and an indoor pool with space for a spa and gym. A four-car garage completes the property.

The outdoor areas include a large swimming pool of approximately 100m², landscaped gardens and a pond, all positioned to take advantage of the open views towards the Mediterranean and Gibraltar.

IDILIQ

ESTATES

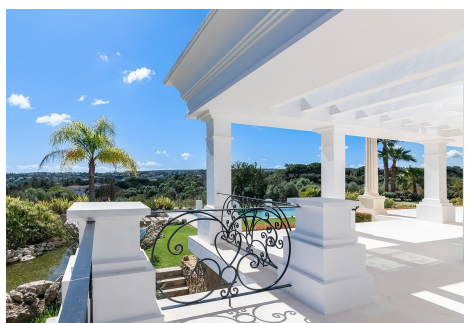
Built with a focus on structural quality and year-round comfort, this is a home that offers both presence and substance, conceived for long-term ownership and to be enjoyed across generations.



+34 951 123 083 | +34 951 123 087 | info@idiliqestates.com Local 28, Edificio D, Centro de Negocios Puerta de Banús, N-340, Km 175, 29660 Nueva Andalucía

IDILIQ

ESTATES



IDILIQ

ESTATES

