



SEMI-DETACHED HOUSE 2 BEDROOMS 2.5 BATHROOMS IN BENAHAVÍS

 Benahavís

REF# R4201366 349.900 €

BEDS

2

BATHS

2.5

BUILT

115 m²

PLOT

181 m²

Charming 2 bedroom semi-detached house in the breathtaking village of Benahavís, surrounded by mountains and set just above the Guadalmina River. The house is built on a 180m2 plot giving it plenty of outside space including private parking and wrap around terrace. On the groundfloor we have a fully equipped, bright kitchen overlooking the south facing terrace, guest w.c. & a spacious living-dining room separated by a few steps making the dining room feel more like an independent area. The living room exits onto a north facing terrace. Upstairs is the master suite with dressing room and another bedroom with dressing room and family bathroom. The upstairs terrace was converted into a possible third bedroom although it's entrance is through the second bedroom therefore becoming an ideal dressing room.

The property is within walking distance to all amenities including local shops, bars & restaurants, sports facilities, children's parks and more.

This property has huge potential and the options to renovate and extend are endless!

Semi-Detached House, Benahavís, Costa del Sol.

2 Bedrooms, 2.5 Bathrooms, Built 115 m², Garden/Plot 181 m².

Setting : Country, Village, Mountain Pueblo, Close To Golf, Close To Shops, Close To Schools, Close To Forest.

Orientation : North, South.

Condition : Good.

Climate Control : Central Heating.

Views : Mountain, Urban.

Features : Fitted Wardrobes, Private Terrace, Ensuite Bathroom, Double Glazing.

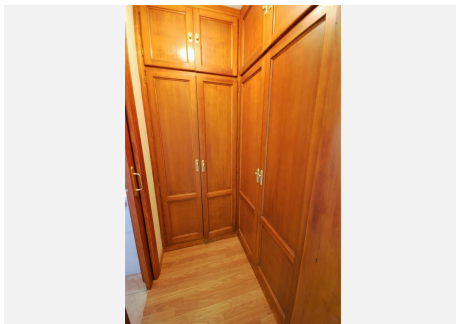
Furniture : Optional.

Kitchen : Fully Fitted.

Parking : Private.

Utilities : Electricity, Drinkable Water, Telephone.

Category : Resale.



IDILIQ

ESTATES

