

IDILIQ

ESTATES



R4625104

📍 Elviria

REF# R4625104 6.990.000 €

BEDS

6

BATHS

6

BUILT

730 m²

PLOT

1240 m²

TERRACE

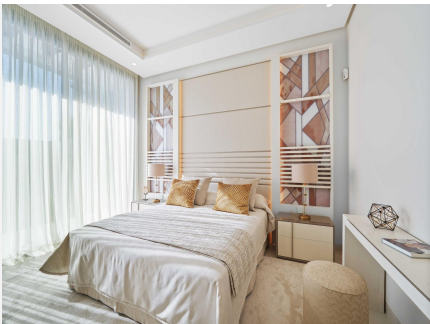
350 m²

Brand new luxury Designer Villa Beach side Elviria next to Estrella del Mar Hotel Luxury living awaits in this stunning 6-bedroom villa located in a prestigious neighbourhood. With breathtaking sea views and a contemporary design, this home offers a modern and sophisticated lifestyle. The high-end finishes and privileged location make it a truly exceptional property. Spread over 4 levels, this 720 m² villa boasts an abundance of natural light and features a high-ceilinged living room with a water feature. The open-plan kitchen is equipped with Miele appliances and the interior design by Pedro Peña adds a touch of elegance. The villa offers 6 bedrooms and 6 bathrooms, including a first floor master suite with a dressing room and an elegant bathroom. A large terrace provides the perfect spot to enjoy the sea views. The outdoor area includes a heated and covered swimming pool, a solarium, and a barbecue area. The garden areas are beautifully landscaped, creating a peaceful oasis. Additional features of this state-of-the-art villa include a garage for 4 cars, home automation systems, an alarm for security, and 4 kWh solar panels for energy efficiency. There is also a guest suite and a staff apartment for added convenience. Amenities such as a games room with a pool table, a cinema area, and a laundry room complete this luxurious property. Located in a prime location, this villa offers high-end services and a modern lifestyle. Elevator from Garage to the roof top

+34 951 123 083 | +44 (0)330 179 8687 | info@idiliqestates.com Local 28, Edificio D, Centro de Negocios Puerta de Banús, N-340, Km 175, 29660 Nueva Andlucia

IDILIQ

ESTATES



IDILIQ

ESTATES

