



R5401108

 Benahavís

REF# R5401108 499.000 €

BEDS

2

BATHS

2

BUILT

98 m<sup>2</sup>

TERRACE

30 m<sup>2</sup>

Modern Penthouse with Three Private Terraces & Stunning Views – Benahavís / San Pedro Area

This beautifully refurbished top-floor penthouse offers a rare combination of modern comfort, privacy and exceptional outdoor space in a peaceful, well-established community.

Completely renovated to a high standard, this bright and airy home is move-in ready and features new electrics, plumbing, air conditioning, flooring, ceilings, kitchen, bathrooms, wardrobes and Kommerling UPVC double-glazed windows.

Key Features

Fully refurbished throughout

2 bedrooms, both with en-suite bathrooms and private terraces

Spacious living room opening onto a large south-facing terrace with open views to the hills and Mediterranean Sea

Third private terrace

# IDILIQ

ESTATES

- Separate laundry room
- Medium-sized storage room
- New water tanks and water softener
- Terrace irrigation system
- Private entrance

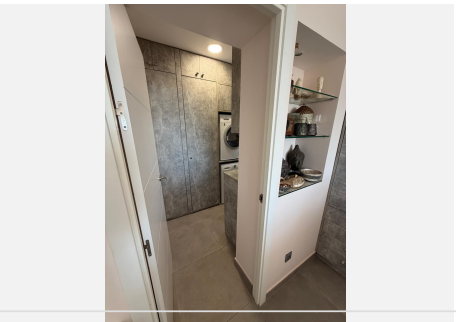
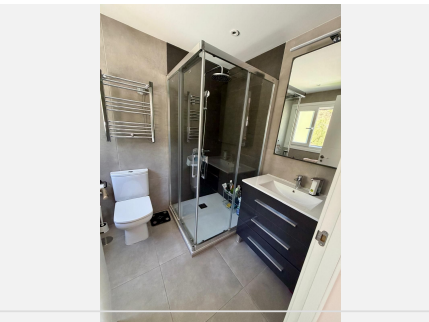
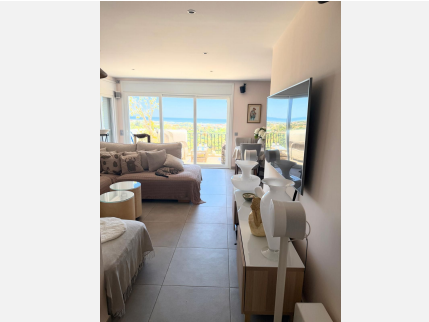
## Urbanisation & Lifestyle

The small, exclusive community offers beautifully maintained gardens with mature palms and lawns, a lovely communal swimming pool and a tennis court. It is a quiet, safe and friendly environment perfect for year-round living.

Located in Puerto del Almendro, just minutes from Monte Halcones shops and restaurants, and a short drive to San Pedro de Alcántara. Excellent access to Marbella, Puerto Banús and the rest of the Costa del Sol.

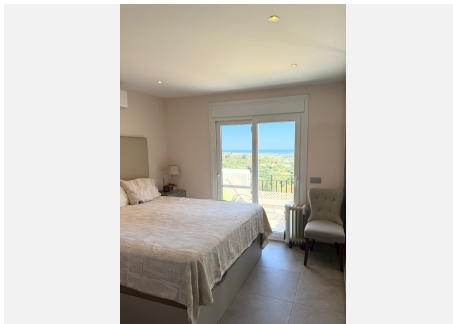
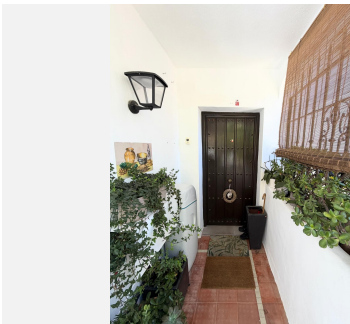
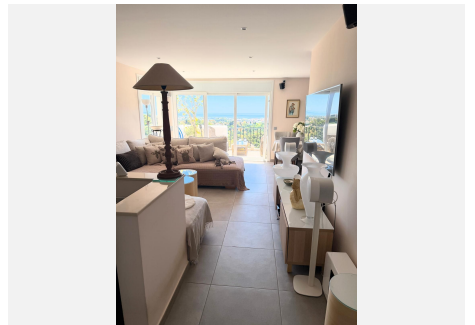
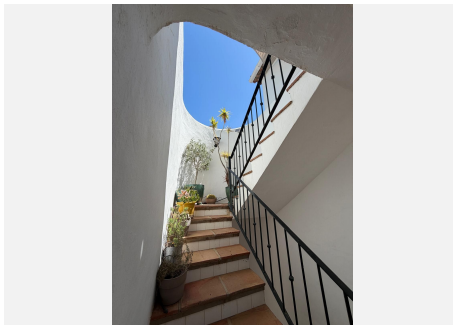
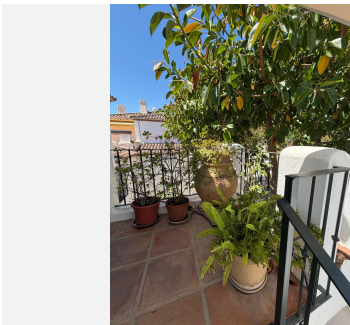
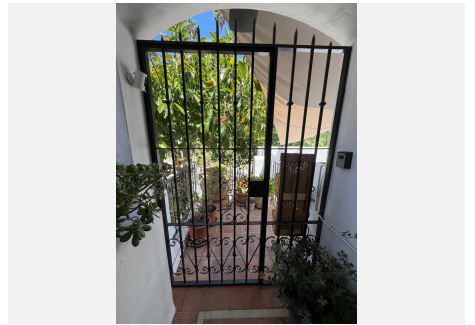
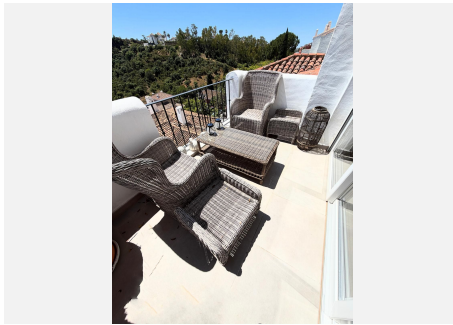
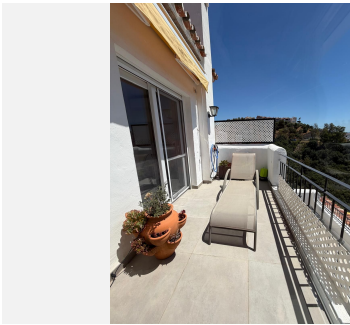
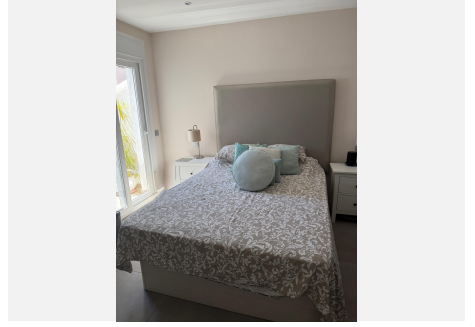
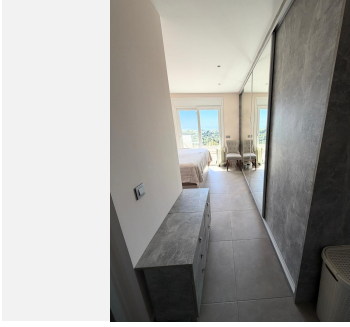
Ideal for those seeking a low-maintenance, high-quality home with abundant natural light and private outdoor space in a tranquil setting.

Viewing highly recommended.



# IDILIQ

ESTATES



# IDILIQ

ESTATES

