



R5378338

📍 Estepona

REF# R5378338 318.000 €

BEDS

2

BATHS

2

BUILT

90 m²

TERRACE

25 m²

Semi-Detached House with Garden & Pool – La Concha-Resina Golf

VALID TOURIST LICENSE!

Great Opportunity!

Charming 2-bedroom semi-detached townhouse (adosado) located in the quiet and well-established residential area of La Concha – Resina Golf, Urbanisation Arroyo las Cañas, very close to Selwo Adventure Park.

This single-storey property offers a comfortable and practical layout, ideal for couples, small families or as an investment.

Key Features

90 m² built

2 bedrooms

2 bathrooms

+34 951 123 083 | +44 (0)330 179 8687 | info@idiliqestates.com Local 28, Edificio D, Centro de Negocios Puerta de Banús, N-340, Km 175, 29660 Nueva Andlucia

IDILIQ

ESTATES

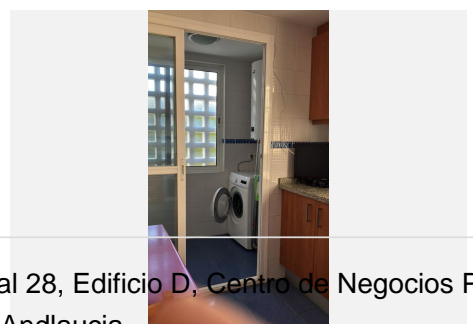
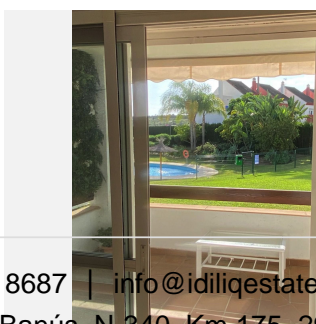
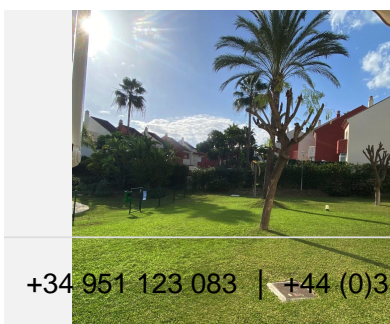
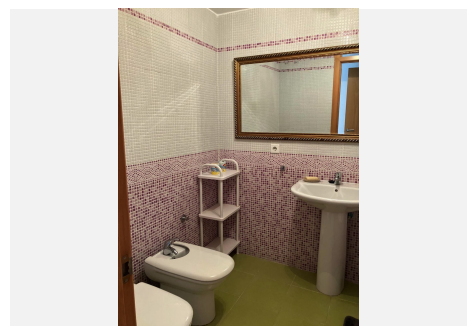
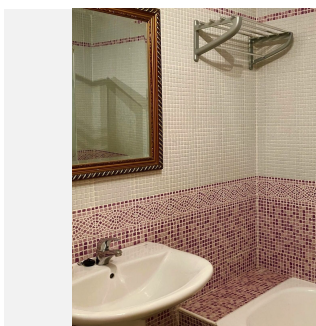
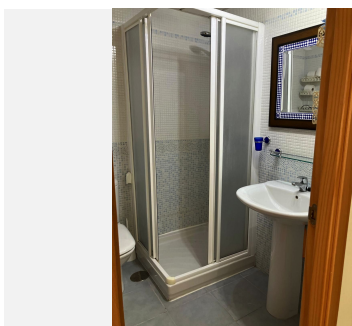
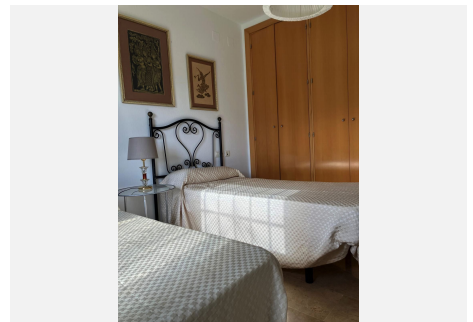
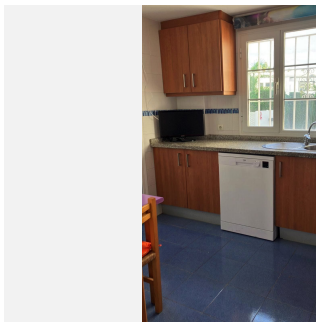
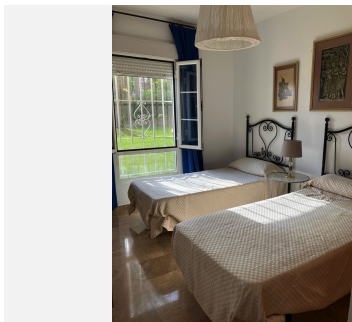
- Private terrace
- Private garden
- Communal swimming pool
- Private parking space
- Fully equipped kitchen and living room
- Air conditioning
- Electric heating
- Fitted wardrobes
- South orientation (maximum sunlight)
- Built in 2006
- Exterior access adapted for reduced mobility

The home is bright and well-maintained, with everything you need to move in straight away. Perfectly situated in a peaceful area surrounded by golf courses and nature, yet close to all services.

Special opportunity: The owner is open to a property exchange (permuta) for an apartment in Málaga or Madrid.

Excellent value for money – a real bargain in this location.

Viewing highly recommended. Contact us for more information or to arrange a visit.



IDILIQ

ESTATES

