



R5356249

 Punta Chullera

REF# R5356249 393.000 €

BEDS

3

BATHS

2

BUILT

172 m²

TERRACE

30 m²

Luxury 3-Bedroom Apartment with 30 m² Terrace, Underfloor Heating & Domotics – Near Sotogrande, Estepona

Discover this spectacular apartment that perfectly combines comfort, quality and a privileged location. This bright and elegant home features 3 spacious bedrooms, 2 modern bathrooms and a practical dressing room for extra comfort and organisation. Built to the highest standards, it includes elegant marble flooring, fitted wardrobes and an advanced climate control system with ducted hot/cold air conditioning complemented by underfloor heating for year-round wellbeing. Integrated domotics further enhance the living experience with technology and efficiency.

One of its standout features is the impressive almost 30 m² terrace with Lumon enclosure and tropical wood flooring — ideal for enjoying any season. Thanks to its excellent south orientation, the property enjoys sunlight throughout the day.

It also includes a large underground parking space and storage room for added daily convenience.

Community Amenities

Set in a meticulously maintained residential complex with beautiful communal areas, including a large outdoor swimming pool, heated indoor pool and exclusive social club.

+34 951 123 083 | +44 (0)330 179 8687 | info@idiliqestates.com Local 28, Edificio D, Centro de Negocios Puerta de Banús, N-340, Km 175, 29660 Nueva Andalucía

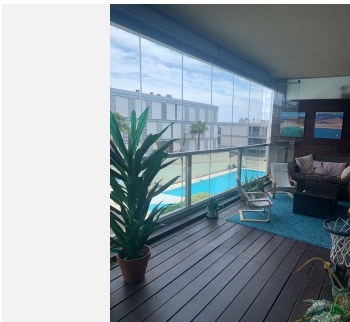
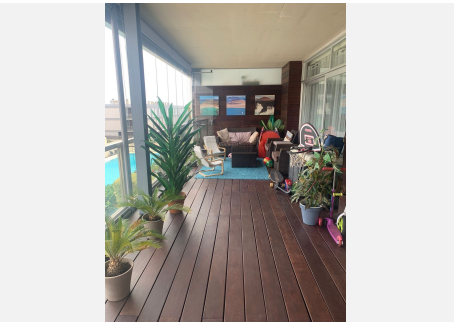
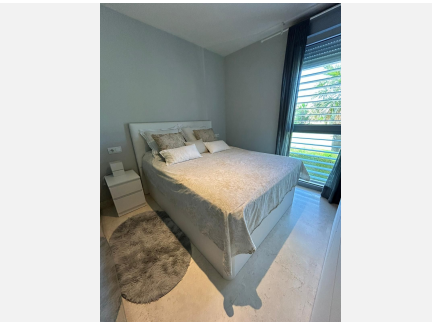
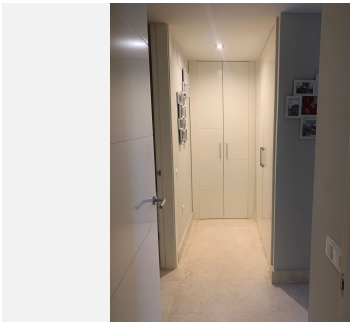
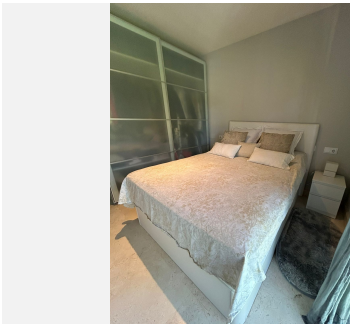
IDILIQ

ESTATES

Prime Location

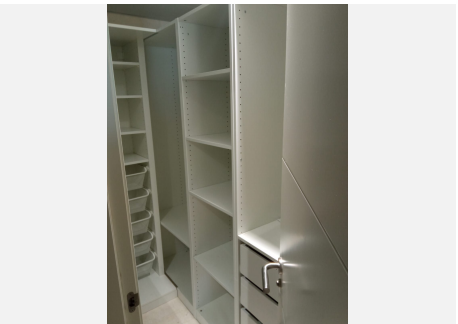
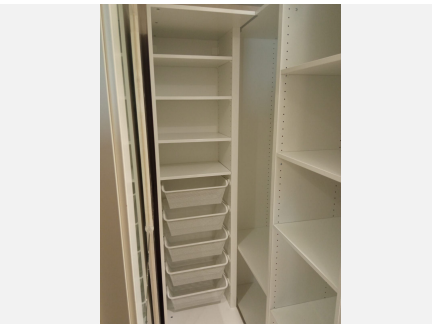
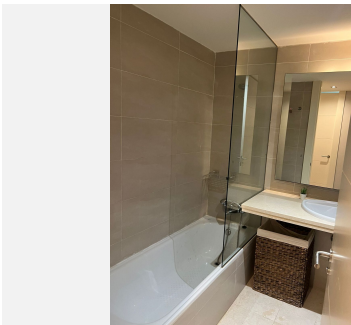
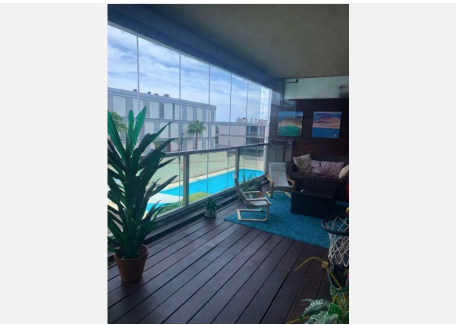
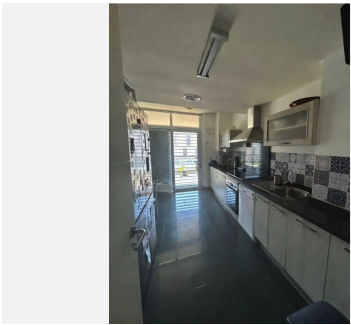
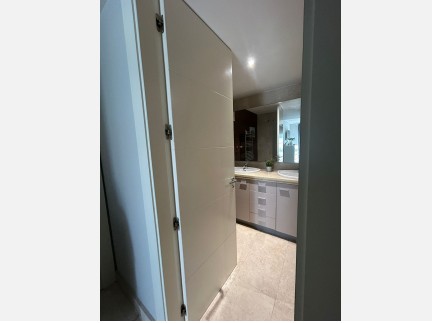
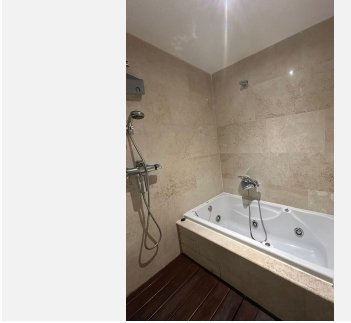
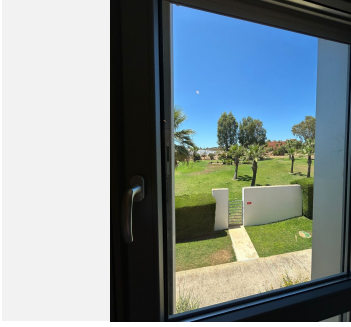
Just 5 minutes from Sotogrande, close to the beach and surrounded by prestigious golf courses, with easy access to the motorway. An exclusive home where quality of life and environment come together.

Viewing highly recommended – contact us today to arrange a private viewing!



IDILIQ

ESTATES



IDILIQ

ESTATES

