



MIDDLE FLOOR APARTMENT 2 BEDROOMS 1 BATHROOM IN MARBELLA

 Marbella

REF# R5351527 690.000 €

BEDS	BATHS	BUILT	TERRACE
2	1	80 m ²	20 m ²

Beachfront 2-Bedroom Apartment with Direct Sea Views & Terrace

Imagine waking up every day to the sound of the waves and stepping onto a large terrace with unobstructed sea views. This bright and welcoming beachfront apartment combines a privileged location, comfort and quality of life in one of the most sought-after spots on the Costa del Sol.

Key Features

- 80 m² built
- 2 bedrooms with fitted wardrobes
- 1 full bathroom
- Spacious and very bright living room
- Independent kitchen
- Magnificent terrace with direct sea views
- Underground parking space included

+34 951 123 083 | +44 (0)330 179 8687 | info@idiliqestates.com Local 28, Edificio D, Centro de Negocios Puerta de Banús, N-340, Km 175, 29660 Nueva Andalucía

IDILIQ

ESTATES

Exterior access adapted for reduced mobility
2nd floor exterior with lift
Communal swimming pool

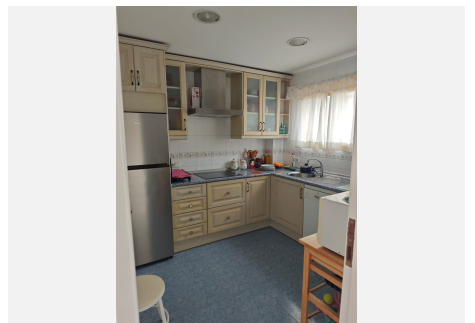
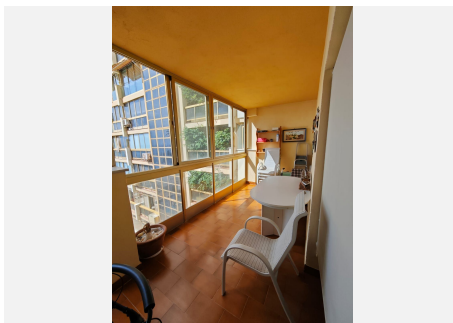
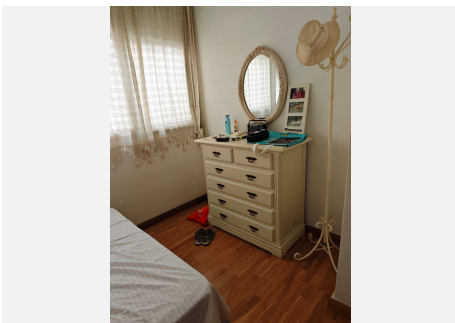
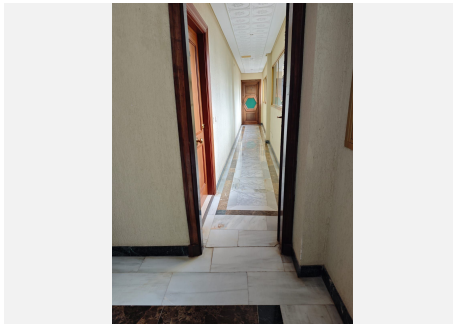
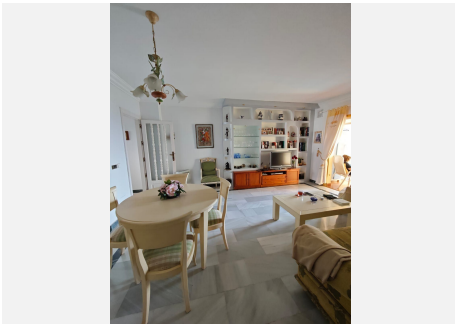
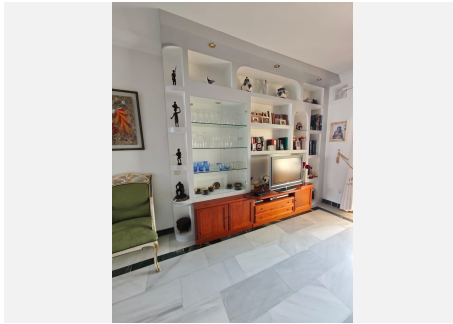
Practical & cosy layout

Entrance hall, separate kitchen, large luminous living room, two bedrooms and a complete bathroom. The highlight is the generous terrace perfect for enjoying the Mediterranean climate and sea views all year round.

This apartment is ideal as a permanent residence or for unforgettable holidays. A rare opportunity on the first line of the beach with parking included.

Prime beachfront location – just steps from the sea, close to shops, restaurants, supermarkets and all services.

Viewing highly recommended – contact us today to arrange a private viewing!



IDILIQ

ESTATES

