



R5294569

 Punta Chullera

REF# R5294569 293.000 €

BEDS

2

BATHS

2

BUILT

100 m²

TERRACE

70 m²

Unique Duplex Opportunity in Chullera, Manilva – Costa del Sol Gem!

Discover this delightful duplex apartment in the serene coastal enclave of Chullera, Manilva, just a short 500-metre stroll from the pristine beaches of Playa de la Chullera and Punta Chullera. Renowned for its crystal-clear waters, rocky coves, and ecological richness, this area offers a perfect blend of tranquillity and natural beauty, with the Mediterranean Sea to the front and protected national parks like El Canuto de la Utrera and Sierra Bermeja rising behind – ideal for hiking and wildlife spotting. Only minutes from the charming Marina de la Duquesa with its array of restaurants, shops, and yachting facilities, plus the prestigious La Duquesa Golf Course, and easy access to Estepona (10 km) and Gibraltar Airport (approx. 35 km), it's superbly connected yet peacefully secluded.

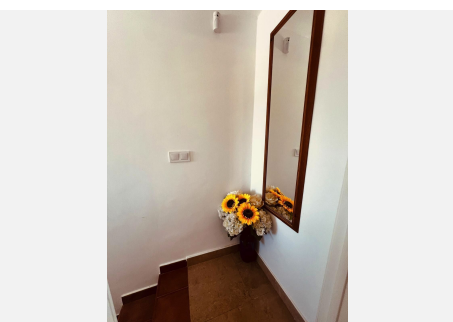
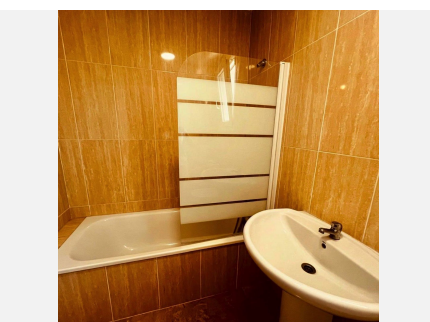
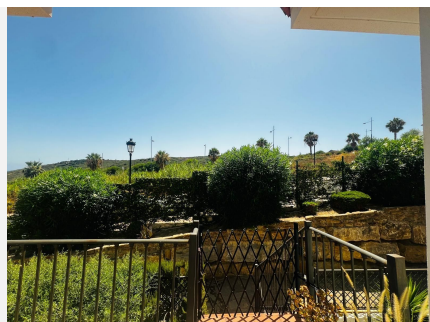
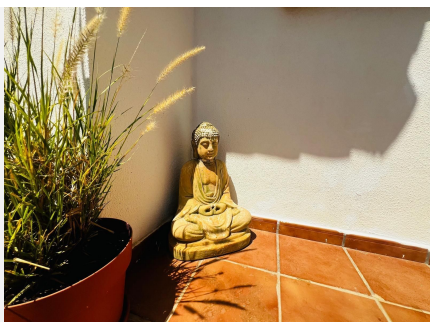
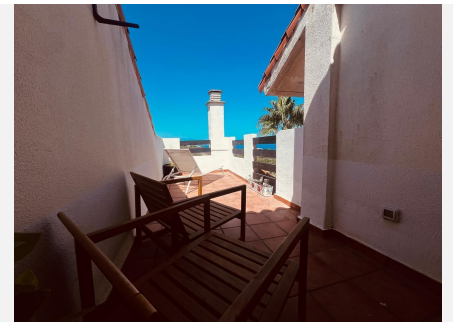
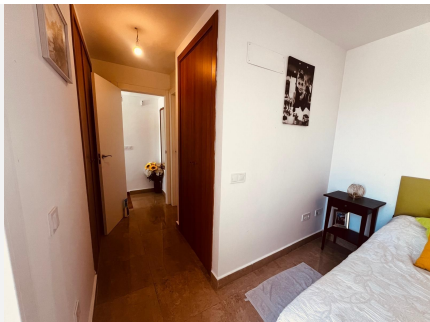
Spanning 100 m² built (89 m² usable), this well-appointed, first-floor interior property (no lift) boasts two spacious bedrooms, two bathrooms, a generous terrace for al fresco living, built-in wardrobes, and a versatile south, east, and west orientation ensuring abundant natural light and stunning sea and mountain

IDILIQ

ESTATES

views. Fully gated and secure with an alarm system, it's a 'lock-up-and-leave' dream for a second home. Residents enjoy three communal swimming pools, lush gardens, and a children's play area, all within a low-maintenance community. An optional garage space is available for an additional nominal fee.

Priced at €293,000 – an outstanding value in this idyllic Costa del Sol location, perfect as a holiday retreat, permanent residence, or savvy investment.



IDILIQ

ESTATES

