



## GROUND FLOOR APARTMENT 3 BEDROOMS 3 BATHROOMS IN CASARES PLAYA

 Casares Playa

REF# R5287111    385.000 €

BEDS	BATHS	BUILT	PLOT	TERRACE
3	3	136 m <sup>2</sup>	20 m <sup>2</sup>	25 m <sup>2</sup>

Exclusive Elevated Ground Floor Apartment with Private Garden and South Orientation in Casares Costa – Costa del Sol

Nestled in the prestigious Casares Golf Garden urbanisation, a secure gated community renowned for its lush Mediterranean landscaping and proximity to the world-class Finca Cortesín Golf Resort – voted Europe's best golf resort multiple times – this stunning elevated ground floor apartment offers an idyllic blend of tranquillity and convenience just minutes from pristine beaches like Playa Ancha and surrounded by top golf courses including Doña Julia and Casares Golf, as well as charming restaurants and amenities in nearby Estepona (10-minute drive) or Manilva. With 136 m<sup>2</sup> built (130 m<sup>2</sup> usable), the property features three spacious bedrooms with built-in wardrobes, three modern bathrooms, a generous terrace for al fresco dining, air conditioning throughout for year-round comfort, central gas heating, and a private garden perfect for relaxation under the Andalusian sun, all enhanced by 24-hour security, communal swimming pools, and expansive gardens. Additional perks include two private underground parking spaces and a large storage

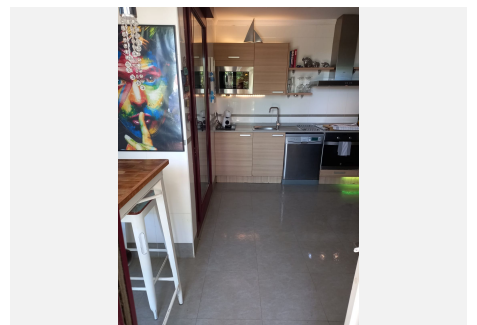
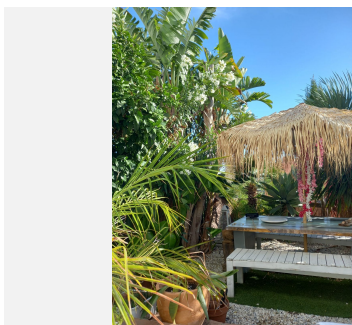
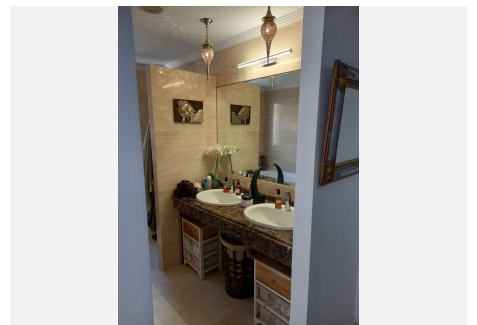
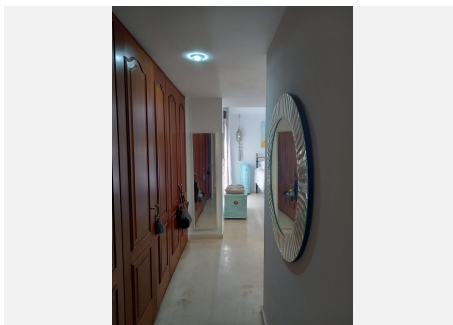
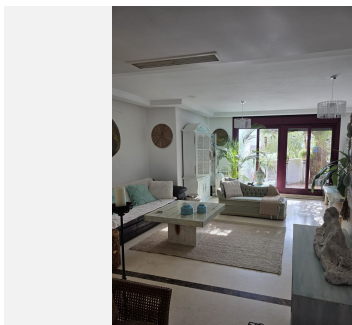
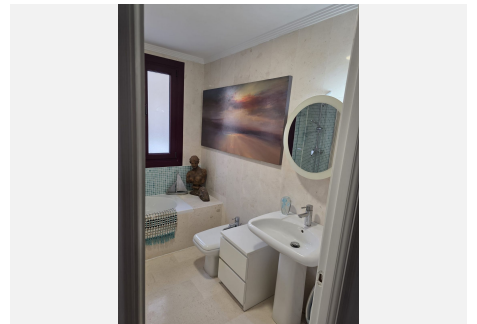
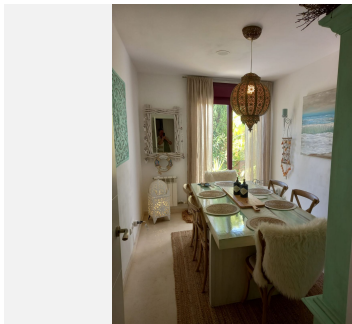
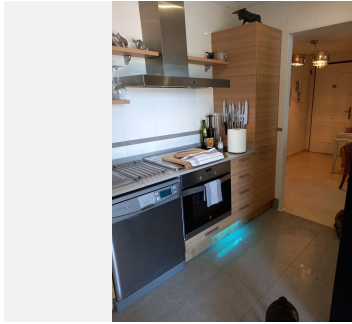
+34 951 123 083 | +44 (0)330 179 8687 | [info@idiliqestates.com](mailto:info@idiliqestates.com) Local 28, Edificio D, Centro de Negocios Puerta de Banús, N-340, Km 175, 29660 Nueva Andlaucia

# IDILIQ

## ESTATES

room, making it ideal as a luxurious second home, family residence, or investment in this sought-after area between Gibraltar (30 minutes) and Marbella (25 minutes).

Priced at €385,000 – a unique opportunity in this premium golf-front enclave, ready for immediate enjoyment!





# IDILIQ

ESTATES

