



HOUSE 2 BEDROOMS 1 BATHROOM IN VALLE DEL SOL

📍 Valle del Sol

REF# R5271616 1.550.000 €

BEDS

2

BATHS

1

BUILT

80 m²

PLOT

1440 m²

TERRACE

70 m²

Charming Detached Villa with Expansion Potential and Stunning La Concha Views in Valle del Sol, Marbella – Costa del Sol

Nestled in the exclusive Urbanización Valle del Sol, a serene residential enclave in Marbella West, this delightful villa offers a perfect blend of tranquillity and convenience on the prestigious Nueva Milla de Oro. Surrounded by lush greenery and just minutes from world-class golf courses like Aloha Golf and Los Naranjos, pristine beaches, and the vibrant amenities of Puerto Banús (10-minute drive), the property boasts breathtaking panoramic views of the iconic La Concha mountain from every corner – a hallmark of Marbella's luxurious lifestyle. Included in Marbella's newly approved 2024 PGOM (Plan General de Ordenación Municipal), which enhances development opportunities, this home is ready for immediate occupancy with immense potential for customisation.

Sitting on a generous 1,440 m² plot, the villa features 80 m² of living space plus expansive terraces, with approved buildable area up to 277 m² for future expansions. The interior showcases elegant parquet flooring throughout, creating a warm and inviting atmosphere. Outdoors, enjoy a beautifully maintained garden, a newly constructed private swimming pool with high-quality materials and a hot water shower, plus a huge

+34 951 123 083 | +44 (0)330 179 8687 | info@idiliqestates.com Local 28, Edificio D, Centro de Negocios Puerta de Banús, N-340, Km 175, 29660 Nueva Andlucia

IDILIQ

ESTATES

children's playground for family fun. All water, electricity, and garden irrigation systems have been recently upgraded, complemented by community well water for significant annual savings on bills. Additional highlights include parking for four cars, a 20 m² reformed storage room convertible into a guest or service bedroom, and full utility supplies.

Plot: 1,440 m²

Built area: 80 m² + terraces (expandable to 277 m²)

Bedrooms: Flexible layout with potential for more

Private pool with hot shower

Parquet floors

Huge children's playground

Beautiful garden with new irrigation

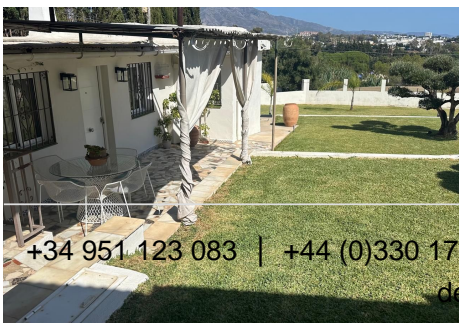
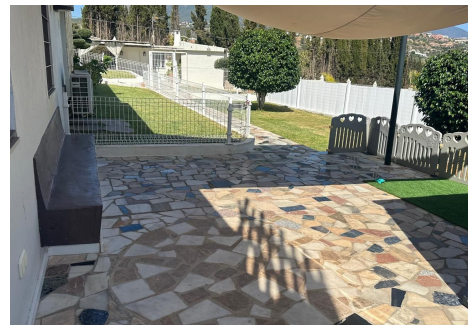
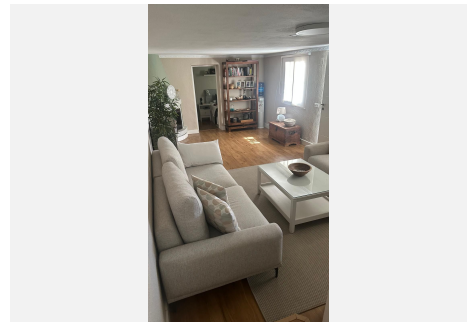
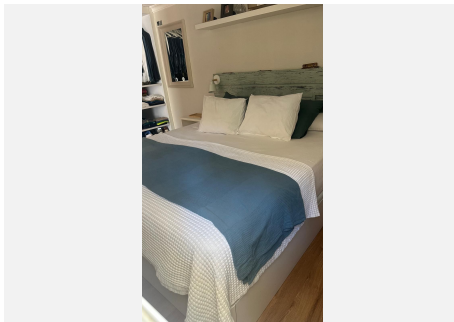
Parking for 4 cars

20 m² storage/guest room

Community well water

Air conditioning and modern installations

An exceptional opportunity to create your dream home in one of Marbella's most desirable areas – ideal for families seeking privacy, views, and growth potential!



+34 951 123 083 | +44 (0)330 179 8687 | info@idiliqestates.com | Local 28, Edificio D, Centro de Negocios Puerta de Banús, N-340, Km 175, 29660-Nueva Andalucía

IDILIQ

ESTATES

