



TOWNHOUSE 3 BEDROOMS 3 BATHROOMS IN MANILVA

📍 Manilva

REF# R5186842 420.000 €

BEDS	BATHS	BUILT	PLOT	TERRACE
3	3	190 m ²	35 m ²	22 m ²

Fully Renovated 3-Bedroom Townhouse in Tranquil Hacienda Guadalupe, Manilva – Stunning Sea Views, Solar Panels, and Optional Community Pool Access!

Discover this exquisite, fully renovated townhouse in the exclusive Hacienda Guadalupe urbanisation, nestled in the serene hills of Manilva between Sotogrande and La Duquesa – a private hillside enclave renowned for its peaceful Andalusian charm, breathtaking coastal vistas, and proximity to world-class golf courses like Finca Cortesín. Spanning two floors with 190 m² built (120 m² usable), this south-east facing property offers a perfect blend of modern luxury and Mediterranean lifestyle, just a leisurely 10-minute walk to pristine beaches and the vibrant La Duquesa marina with its restaurants and shops.

Key Features:

Open-Plan Ground Floor: A spacious living-dining-kitchen area designed for seamless flow, with access to a covered front terrace and open garden for morning sun, plus a rear patio ideal for all-day shade or sunshine – perfect for al fresco relaxation.

+34 951 123 083 | +44 (0)330 179 8687 | info@idiliqestates.com Local 28, Edificio D, Centro de Negocios Puerta de Banús, N-340, Km 175, 29660 Nueva Andlucia

IDILIQ

ESTATES

Upper Floor Retreat: Three generous bedrooms, a family bathroom, and a shower room; two bedrooms share a terrace with magnificent coastal views and spectacular sunrises over the Mediterranean.

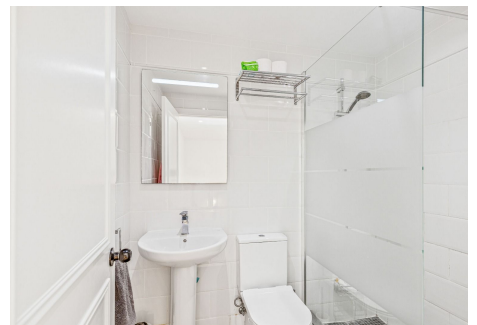
Eco-Friendly Efficiency: Solar panels ensuring ultra-low electricity bills from just €30/month, promoting sustainable living in this eco-conscious community.

Community Options: Low fees of €40/month, with an optional supplement for access to the communal swimming pool; enjoy well-maintained gardens and secure surroundings.

Modern Comforts: Fully equipped with air conditioning, built-in wardrobes, terraces, and balconies; ready to move in with no renovations needed.

Prime Conveniences: Ample space for parking, and a location minutes from amenities like supermarkets, schools, and healthcare; 10-15 minutes drive to Estepona's town centre or Sotogrande's polo fields.

This turnkey gem is an ideal family home or holiday retreat in a high-demand area, combining tranquillity with easy access to the Costa del Sol's beaches, golf, and attractions. Contact us today to arrange a viewing!



IDILIQ

ESTATES

